

January 2023

THE DRYBLOWER

*Cue's only dedicated news resource on what's happening
in and around Cue.*



A not for profit community newsletter
produced and distributed by the Cue
CRC.

All editions are available
electronically via cuecrc.net.au or
cue.wa.gov.au.

DISTRIBUTION OUTLETS

Cue CRC
Shire of Cue
Queen of the Murchison B & B
Murchison Club Hotel
Cue Tourist Park
Cue Roadhouse

ADVERTISEMENT PRICES

SIZE	B & W	COLOUR
Full Page	\$30.00	\$60.00
Half Page	\$15.00	\$30.00
Quarter Page	\$10.00	\$15.00

DISCLAIMER

The information and personal views in this publication do not necessarily reflect the views of the Cue CRC or its employees. No liability shall be incurred for any omissions or errors in published articles or contributions. This publication is produced and distributed by the Cue CRC and any complaints should be directed to the Cue CRC.

CONTACT DETAILS

Cue CRC
72 Austin Street
PO Box 83
Ph: 08 9963 1198
E: info@cuecrc.net.au

All contributions are due by the 25th for publication on the 1st.

Unable to collect your copy of The Dryblower?
Fill in the form below and send with your remittance.

NAME: _____

ADDRESS: _____

SUBSCRIPTION: _____ \$26.40 per year (this is for the cost of postage only)

A U S T R A L I A D A Y

2023

26TH JANUARY SHIRE OVAL

FROM 6.30PM

Fireworks

Free Community Event

Live Music with Geoff Udy

Water Slide

Free BBQ



CUE CRC

Hi Cue,

And welcome to 2023! The Cue CRC staff and management hope you all had a safe and happy Christmas and new year.

As you know we closed for the Christmas/New year period and we are refreshed and ready for the new year and all that it brings.

So far for this year we have organised the usual craft day—which will be every Wednesday, 3 Cricut Craft workshops with the potential for more, a Twilight Market in February and Sunday Markets starting in March or April. We are looking to run technology related workshops for older Australians. We are also hoping to have some more musical entertainment throughout the year. There are a few other ideas in the works that we would like to do, depending on resources.

For our ever expanding retail section we have ordered a large amount of new stock, that has started to come in and we'll be posting regular updates on Facebook and in the Dryblower.

For January the CRC doesn't have any activities planned, but we have Department of Transport visiting on the 23rd for all your vehicle registrations and licence requirements.

Julie Humphreys
Manager





We are Hiring

The Cue CRC is seeking to recruit a new staff member who will work mainly in reception with the inclusions of cleaning and gardening where required. Training supplied. Hours will vary from 10 to 40+ hours per fortnight.

Reception duties include:

- # Answering phones**
 - # Welcoming visitors in a professional manner**
 - # Giving tourist information to visitors**
 - # Handling customer enquiries**
 - # Copying & scanning documents**
 - # Retail sales**
 - # Assist with the publication of The Dryblower**
-

Cleaning/Gardening duties include:

- # Cleaning CRC - kitchen, floors, retail area etc**
 - # Cleaning CHC - floors, display cabinets etc**
 - # Bathrooms - weekly clean**
 - # Weeding as required**
 - # General yard maintenance**
 - # Front of CRC**
-

The position will not start until 1st February 2023.
Applications close on 16th January 2023.

Please email a copy of your resume to the CRC on info@cuecrc.net.au or pop into the CRC to see Julie.

CHC NEWS

The nickelodeon, which was made in Italy in 1928, has recently had a facelift. All of the musical instruments and many smaller parts have been meticulously cleaned and clear acrylic sheets have been put in place over the instruments. The lid has been removed to expose the barrel inside and the coin mechanism has been repaired to working order. The acrylic allows people to clearly see the hundreds of components which make up the nickelodeon and it also protects them from dust, deterioration and damage.

The large wooden boxes containing the two other music barrels have some reinforced edging to make them stronger. The barrels are made of wood and covered in paper which is very old and fragile. Each box now also has a clear acrylic top to prevent visitors from touching them and prolong their longevity. These are small improvements but the overall impact is well worth it. You are welcome to come and see the upgrades to this amazing instrument.

Sandra Box
Customer Service Officer



**CUE HERITAGE
CENTRE**

Cricut Craft

Workshops for 2023

- Adhesive Vinyl on Shampoo bottles
- Adhesive vinyl on keyrings
- Faux leather earrings



Dates to be confirmed. Please contact the Cue CRC to prebook:
Ph: 9963 1198 or E: info@cuecrc.net.au



**Free
Plumbing
Service**

Think climate change.
Be waterwise.





A leaking tap can waste up to 10,000 litres of water a year.

Climate change means it's more important than ever to save water. Every drop counts, which is why we're offering a free service from a licensed plumber. They will check for leaks, complete minor repairs and upgrade to water efficient fittings if required.

Register at
watercorporation.com.au/plumbingservice

Terms and conditions apply.

Think climate change.
Be waterwise.



FROM THE CEO

Happy New Year to everyone. I hope you have all had an enjoyable festive season and welcome back to those that travelled outside the district during their break. The Shire of Cue was closed for a couple of weeks over the Christmas and New Year period and I thank the staff that worked over the break to keep the town in good shape.

The Cue Community Christmas Party was held on Saturday 10 December in the Shire Hall with around eighty people in attendance. The Cue Primary School provided a great show of entertainment with a Christmas concert and their end of year presentations. Following this we had a visit from Santa with plenty of gifts for all. The night was well catered for with a magnificent Christmas dinner thanks to some of our local suppliers and the Shire staff.



Following the December Council meeting, Shire representatives inspected entries in the Shire's Christmas display competition. Congratulations to the following for their fantastic efforts:

- First prize (\$400) – Kelli Young
- Second prize (\$300) – Sandra Box
- Third prize (\$200) – Reuben Robinson

Shire President Ross Pigdon, Deputy President Les Price and I attended the Aboriginal Cultural Heritage Act Co Consultation forum in Mt Magnet on Thursday 1 December 2022. The process was to provide feedback and proposed suggestions to the Department of Planning Lands and Heritage on the proposed regulations and policies. This included due diligence assessments, activity tables, consultation guidelines, engagement with knowledge holders and prescribed timeframes. We are also advocating that local aboriginal people be engaged as part of the process and offered potential employment opportunities as local knowledge holders.

Australia Day 2023 celebrations will be held on the oval from 6.30pm Thursday 26 January, with fireworks, live music with Geoff Udy, water slide and free BBQ. Celebrations for Australia Day have been made possible by funding from Auspire, part of the Australia Day Council National network. Councillors considered Australia Day active citizenship nominations at the December Council meeting and the recipients of these awards will be announced at the Australia Day celebrations.

Residents are asked to be mindful of the potential for heavy rains and damaging winds in the early months of the year. Please secure any loose items around yards, particularly if you are going away and use caution on Shire roads after rain. Arrangements to have any larger items removed can be made by contacting the Manager of Works and Services at the Shire.

Roadworks are ongoing 1km south of town on the Great Northern Highway. I have been informed that asphalt works are scheduled for mid-January to complete this section of roadworks. Westgold are modifying and improving the intersection where the Miners Pass Road meets the highway. Traffic management and reduced speed limits are in place. Travellers can expect minor delays.

Mosquito fogging operations are being undertaken when weather conditions allow. Residents are asked to check their properties and remove any potential mosquito breeding areas, by emptying containers holding water, ensuring gutters are not holding water and checking yards for areas that hold water.

Upcoming events:

- Thursday 26 January – Australia Day, Cue Town Oval
- Friday 17 March – Community Access First Aid Training

Richard Towell
Chief Executive Officer, Shire of Cue

Next ordinary Council meeting - 6:30pm Tuesday 21 February 2023



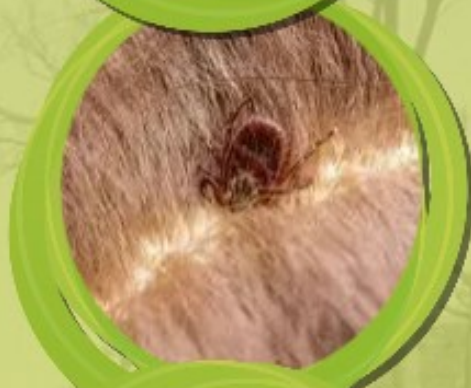
ENVIRONMENTAL HEALTH

Yulella can assist you with:

- Rubbish collection (Needs to be ready)
- Leaking taps & basic plumbing repairs
- Parasite Control Treatments
- Whipper snipping around septic tanks
- Removing rubbish from Community
- Cockroach baits
- Mice traps
- Removal of stray animals
and more!

We also have free soaps, sanitisers, and
emergency relief frozen meals available!

Please call Reception on 9980 1339 for
enquiries or to request these services



Supporting Regional WA



Peter Foster MLC

MEMBER FOR MINING AND PASTORAL REGION

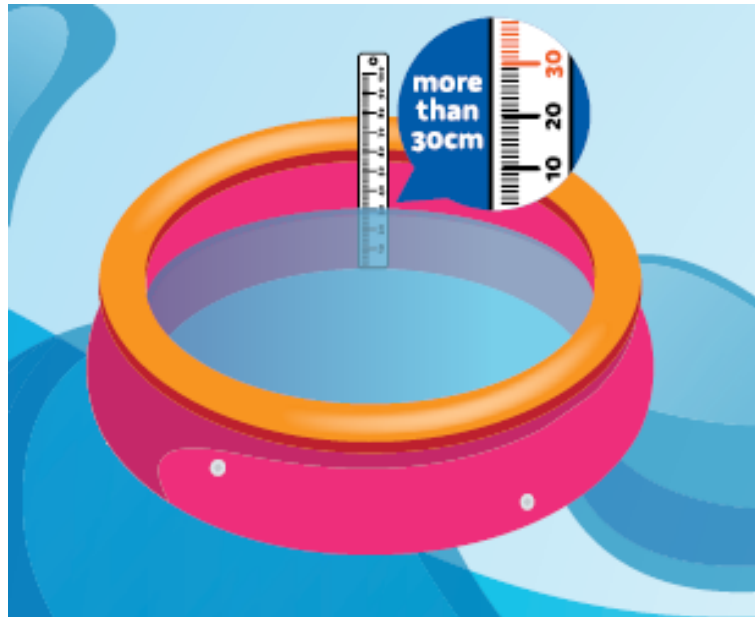
 peter.foster@mp.wa.gov.au

 [PeterFosterMLC](https://www.facebook.com/PeterFosterMLC)

 (08) 9144 4187

Authorised by P. Foster, 49/5 Sharpe Avenue, Karratha, WA 6714

Rules for Portable Pools



By law, swimming pools (portable as well) and spa pools containing water more than 30cm deep (the length of one ruler), must be enclosed by an effective safety barrier that complies with the laws. It must also be registered with the Shire of Cue.

Young children can drown in portable pools in a matter of seconds if left unsupervised

HELP SAVE YOUNG LIVES IN AND AROUND WATER

- ◆ Never prop a pool gate open.
- ◆ Ensure you always actively supervise children within arm's reach whenever they are in, or around the water regardless of how much water is in the pool.
- ◆ Never rely on older children to supervise younger children, no matter how confident you are about their ability.
- ◆ For smaller pools ensure they are emptied and stored safely away from young children after use.
- ◆ Ensure the pool cannot fill with rainwater or water from sprinklers
- ◆ Ensure the barrier is clear of climbable objects.

For more information: www.dmirs.wa.gov.au/portable-pool

Agent

At a Services Australia Agent you can:



use our computer to access my.gov.au and other government programs and services and to search for jobs



use the telephone to access our self service options or speak to us



access free Wi-Fi 24/7 to connect to government services. No password required



scan, fax and photocopy documents



have your confirmation of identity documents certified



lodge forms or pick up brochures

Agents can:

- respond to general questions on payments and services
- show you a quick and easy way to do your business using self service
- help you complete forms and other paperwork, and
- arrange referrals to specialist services.

Agents can't:

- make, review, assess or vary your payments, or
- issue Electronic Banking Transfers (EBTs), concession or Medicare cards.

Agents aren't Services Australia staff.

Your local Agent is:

Cue Community Resource Centre

Address:

72 Austin Street

Cue WA 8640

Hours of business:

Monday to Friday

9.00am to 4.00pm

To find other Agent locations go to servicesaustralia.gov.au

Self service

You can use your myGov account to access your Centrelink, Medicare and Child Support online accounts. Go to my.gov.au

You can also access our services through the Express Plus mobile apps.

For more information go to servicesaustralia.gov.au/selfservice

Centrelink phone self service

Phone self service 136 240

To report your income and changes to your circumstances 133 276

How to contact us

Go to servicesaustralia.gov.au for more information about payments and services or call the listed '13' or '1800' number most relevant to your situation.

ABSTUDY Freecall™ 1800 132 317

Assistance for Isolated Children 132 318

BasicsCard balance enquiry Freecall™ 1800 057 111

Centrelink debt repayment Freecall™ 1800 076 072

Child Support 131 272

Disability, Sickness and Carers 132 717

Families 136 150

Farmers and their partners 132 316

Financial Information Service 132 300

For information in other languages:

• Centrelink 131 202

• Medicare and Child Support 131 450

Grandparent Advisers Freecall™ 1800 245 965

Income Management and BasicsCard Freecall™ 1800 132 594

Indigenous Call Centre Freecall™ 1800 136 380

Indigenous debt repayment Freecall™ 1800 138 193

Job seekers 132 850

Low Income Health Care Card 132 490

Medicare 132 011

Medicare Aboriginal and Torres Strait Islander Access Line Freecall™ 1800 556 955

National Redress Scheme Freecall™ 1800 737 377

Older Australians 132 300

Students and trainees 132 490

TTY* enquiries Freecall™ 1800 810 586

Complaints and feedback Freecall™ 1800 132 468

Call costs from your home phone to a:

• **13 number** from anywhere in Australia may vary depending on the call plan you have chosen from your telephone service provider—mobiles may incur a higher charge.

• **1800 number (Freecall™)** are free—calls from a public phone and mobiles may be timed and charged at a higher rate.

* TTY is only for people who are deaf or have a hearing or speech impairment. A TTY phone is required for this service.

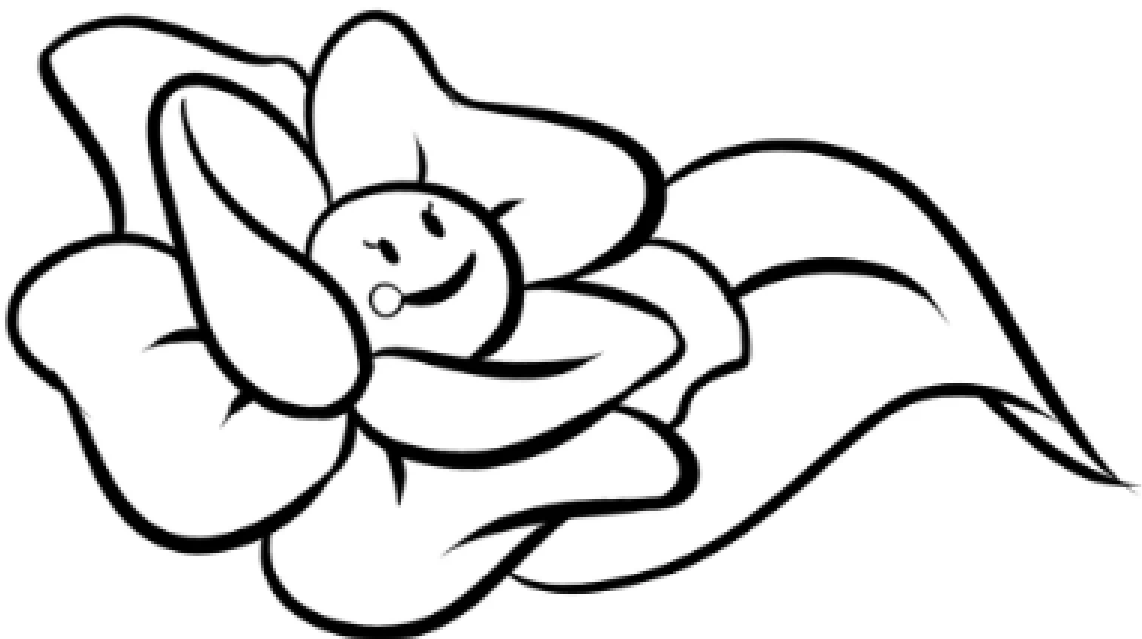
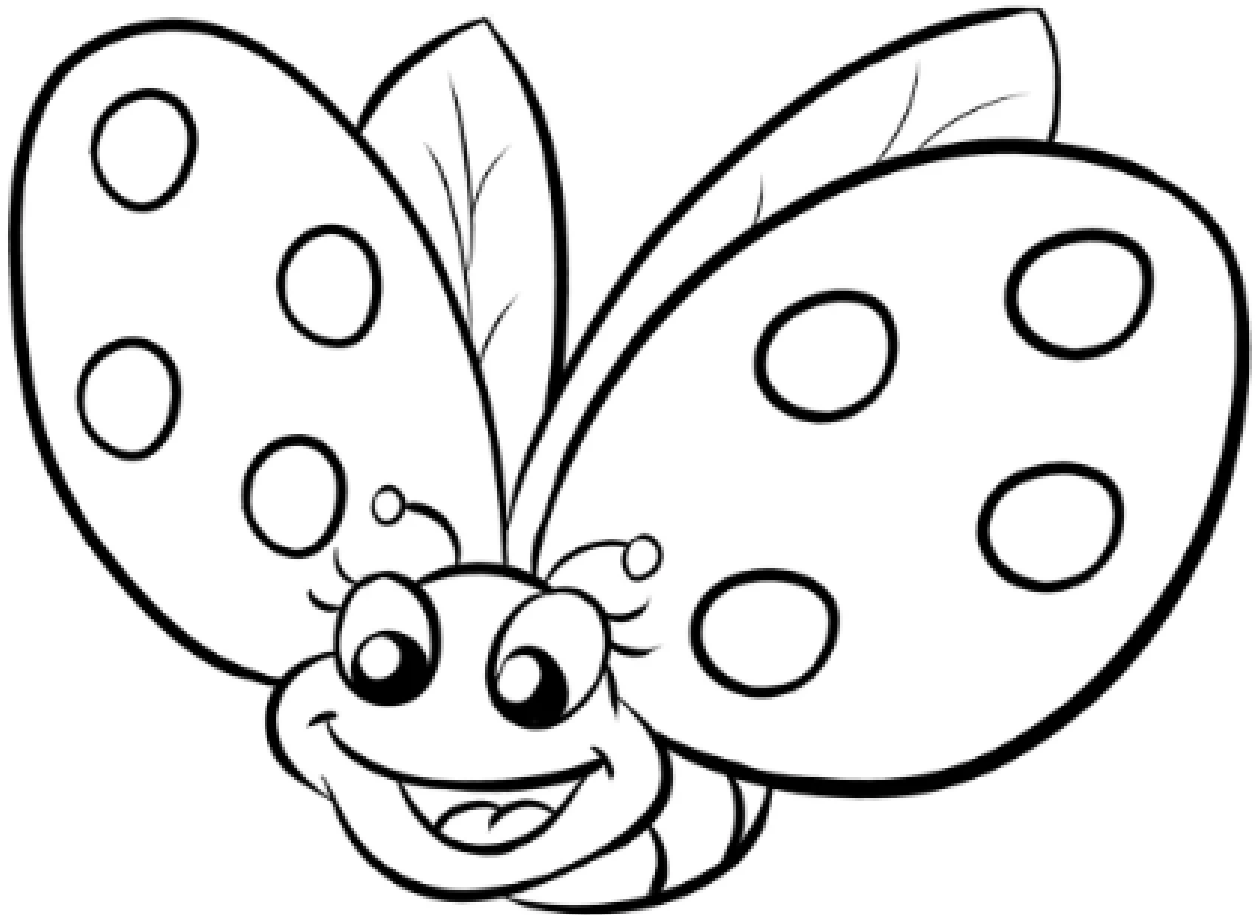


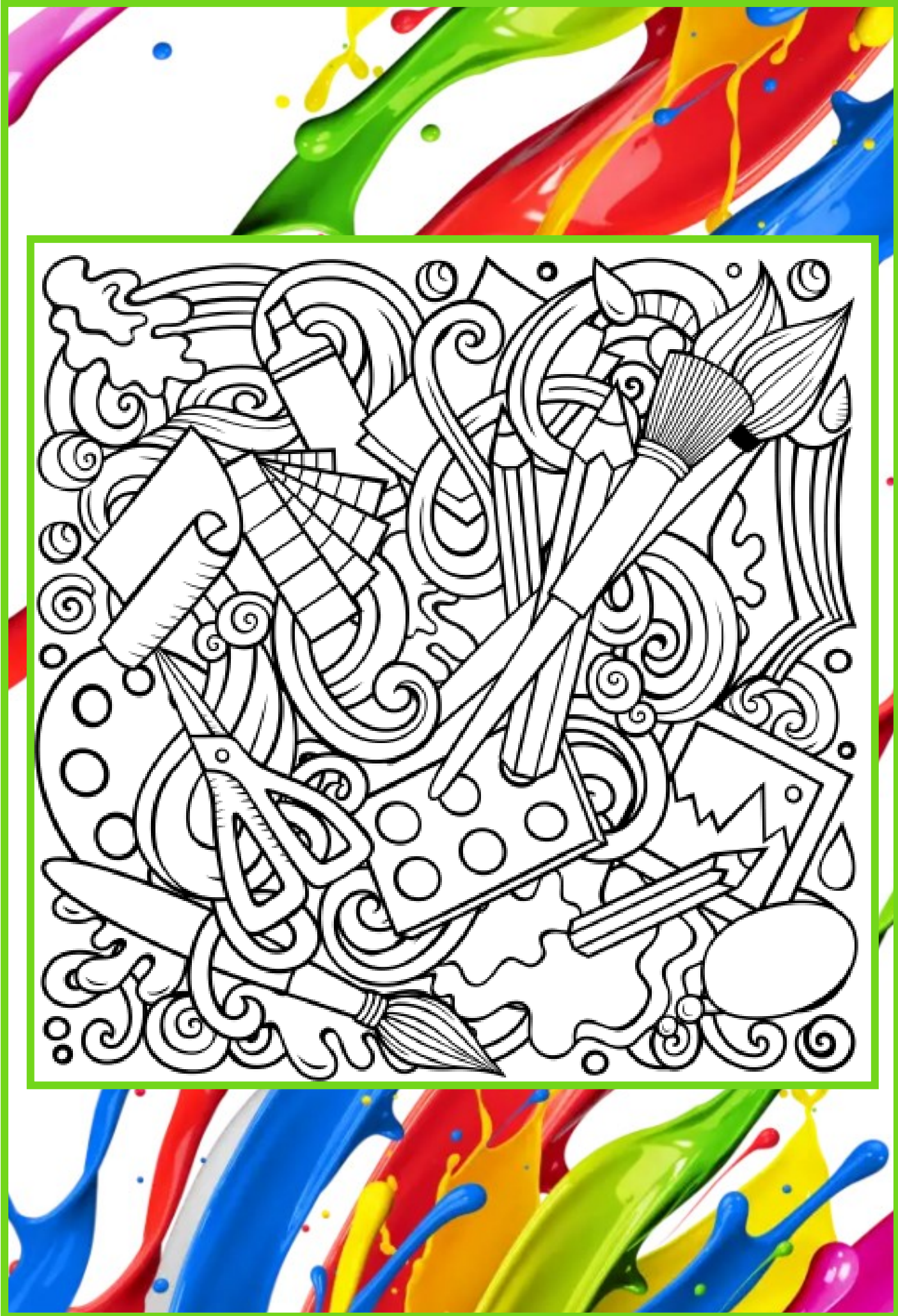
Australian Government
Services Australia



servicesaustralia.gov.au

COLOURING PAGE







Cue
Community Resource Centre
Your local connection

NEW STOCK



NECKLACES
\$34.95





Cue
Community Resource Centre
Your local connection

NEW STOCK

EARRINGS \$19.95





PLUMBING & GAS

SERVICING MID WEST & GOLDFIELDS REGIONS

MINING | COMMERCIAL | RESIDENTIAL | INDUSTRIAL

24/7 EMERGENCY

PH : 0416 307 843 | ADMIN@LEISKHYDRAULICS.COM.AU

COMPUTER USE FACILITIES

The Cue CRC
has guest computer facilities.
Feel free to come down
and use it.
Our friendly staff are here
to assist you if required.

For more info contact the Cue CRC on
Ph: 9963 1198 or E: info@cuecrc.net.au

- ✓ Internet access
- ✓ Email
- ✓ Banking
- ✓ Many more...



BELL & CO (EMPORIUM) LIQUOR—GROCERIES



49 Austin St, Cue W.A. 6640

OWNER /MANAGERS
Ross & Pix Pigdon

*Please let us know if you are not happy
with our service*

Shop Hours

Monday—Friday: 9 am — 1.00 pm
Monday—Friday: 3.30pm — 6.00 pm
Saturday: 9 am — 12.00pm
Sunday: Closed
Public Holidays: to be advised

Agents For:

All Evaporative Air Conditioning Parts
Coerco Water Tanks & Agriculture Products
Mt Magnet Meats
Toll Ipec
Firearms Dealer

Phone: 08 99631012
Fax: 08 99631370
Pix Mobile: 0428508090
Mobile: 0427864165 (Toll Ipec)
email: bellcoptyltd@bigpond.com.au

**MOUNT MAGNET
MEATS**



**The only FRESH PRODUCE
BUTCHER in the Mid West**

Open
Monday - Friday
9am - 5pm
&
Saturday
9am - 12pm

76 Hepburn St (Main Street) Phone / Fax 9963 4195

*Pleased to meet you
with meat to please you*

LOGIC PUZZLE

		Names					detergents					puzzles				
		clayton	madison	perla	quinton	saniya	biz	bold	clorox	tide	ultra	crosswords	cryptograms	drop quotes	logic puzzles	sudokus
week days	Monday															
	Tuesday															
	Wednesday															
	Thursday															
	Friday															
puzzles	crosswords															
	crptograms															
	drop quotes															
	logic puzzles															
	sudokus															
detergent	nbiz															
	bold															
	clorox															
	tide															
	ultra															

CLUES

1. Of the person who arrived on Wednesday and the person who likes sudokus, one uses Clorox and the other is Madison.
2. The person who arrived on Friday doesn't use Bold or Clorox
3. Perla didn't arrive on Monday.
4. The person who likes sudokus arrived the day after the person who likes crosswords.
5. Either the person who arrived on Monday or the person who arrived on Thursday loves to solve drop quotes.
6. Of the person who likes logic puzzles and Clayton, one arrived on Tuesday and the other on Friday.
7. Quinton does not like logic puzzles.
8. The person who arrived on Friday doesn't use Tide.
9. Quinton arrived the day after Madison.
10. Of the person who uses Biz and Perla, one arrived on Tuesday and the other loves drop quotes.

WORD SEARCH

N D A T A R A C S M B S I Z
 I E I V I E S O T L H E N E
 N G A S O L I N E I P R T C
 T G S L E W T S R I Y U A I
 H O V E R S S T P N H C K T
 S F K T H E I I R C A K E N
 T I N T S C W T E O D U S E
 Y R R E B N T U T G E S Y R
 L A P R D E O E N N S E L P
 E A L H E I B N I I U Z D P
 C S T E I D L C S T O A I A
 S N R A D U I I I O R G G B
 G M E D I A G E M O G N I B
 W A I S T N E S E R P E R G

Apprentice	Chute	Gazes	Ninths	Tints
Audiences	Constituencies	Groused	Oblige	Twist
Avows	Cures	Hovers	Represents	waist
Berry	Darns	Incognito	Rigidly	
Bingo	Delay	Intakes	Ruckus	
Blesses	Diets	Ivies	Shirt	
Cacao	Etches	Letterheads	Sleek	
Capes	Fogged	Media	Style	
Carat	Gasoline	Misinterprets	Tidied	

EMERGENCY CONTACTS

EMERGENCY SERVICES - 000
Health Direct - 1800 022 222

NON-EMERGENCY
Police - 131 444
Nursing Post - 9963 0100

If you are feeling unwell, things to consider:

Nursing Post open Mon - Fri 8am to 4pm.

Nearest hospital is 120km away in Meekatharra.

The ambulance service in Cue may require the assistance of volunteers from Meekatharra or Mt Magnet to attend your call.

Cue is a remote community, be proactive, attend to your medical needs ASAP.

NURSING POST



January 2023

RFDS:

Tuesday 10th

Tuesday 24th

Please contact the
Nursing Post for
GRAMS.

Dates were correct at time of print.
Please contact the Nursing Post to
confirm dates (08) 9963 0100.

EMERGENCY SERVICES

Fire & Rescue, Ambulance & Police

In case of emergency please call

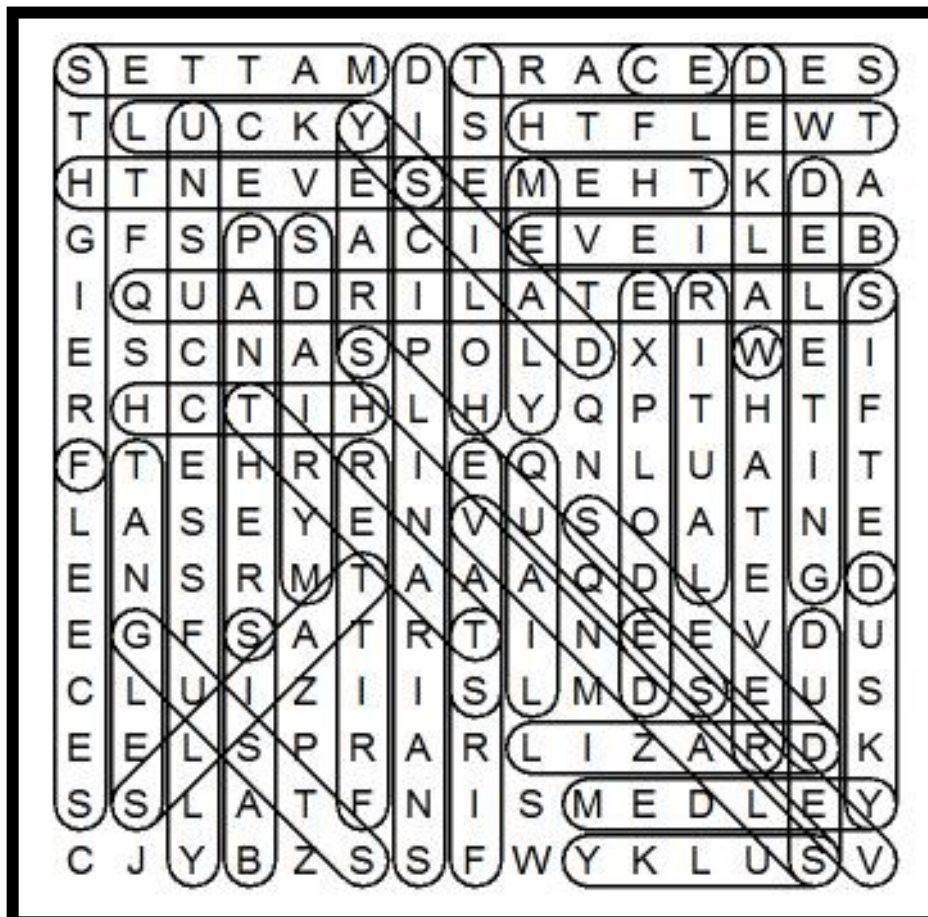
000

December Puzzle Solutions

DECEMBER LOGIC PUZZLE

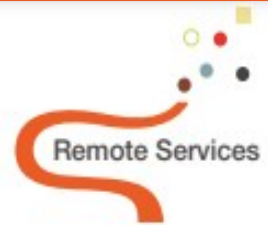
Week days	Names	ice cream	breads
Monday	rachel	vanilla	cornbread
Tuesday	cody	coffee	matzo
Wednesday	peter	fudge ripple	brioche
Thursday	santiago	chocolate	white bread
Friday	madisyn	butter pecan	flatbread

DECEMBER WORD SEARCH



January

SUNDAY	MONDAY	TUESDAY	WEDNESDAY	THURSDAY	FRIDAY	SATURDAY
1	2 CRC CLOSED	3 CRC CLOSED	4 CRC CLOSED	5 CRC CLOSED	6 CRC CLOSED	7
8	9 CRC CLOSED	10 RFDS	11	12	13	14
15	16	17 COUNCIL MEETING	18	19	20	21
22	23	24 RFDS	25	26 AUSTRALIA DAY	27	28
29	30	31				



Department of Transport Remote Services

Visiting: Cue CRC

When: Monday, 23rd January 2023, 1pm to 3pm

Where: 72 Austin Street, Cue WA 6640

We will be able to help you with the following services:

- theory test
- photo card applications
- driver's licence applications
- change of address
- registration and driver's licence renewals
- vehicle transfers
- return of vehicle plates
- driving assessments

To enable us to help you, please ensure you bring your birth certificate, Medicare card, bank card and two types of proof of residency, along with cash or card for payment.

For enquiries please call:

Karen - 9216 8194

Swap queue time, for you time



Online services
available 24/7

Sign up to DoTDirect online services for around the clock services, payments, and applications, to manage your personal details, and more.

www.transport.wa.gov.au/dotdirect

DoTDirect



CUE PHONE BOOK & BUSINESS DIRECTORY 2023

The Cue CRC is updating the phone book in the coming months.
If you would like your personal details or even your business details in the phone book, please fill in the form and drop in to the CRC or email it to us on info@cuecrc.net.au.

PERSONAL INFORMATION:

Name: _____
Address: _____
Phone: _____
Email: _____

BUSINESS INFORMATION:

Business: _____
Contact: _____
Address: _____
Phone: _____
Email: _____
Website: _____

Businesses are also welcome to place an A5 ad for a small fee.



Cue

Community Resource Centre

Your local connection

CRC Opening Hours

Monday

9am to 4pm

Tuesday

9am to 4pm

Wednesday

9am to 4pm

Thursday

9am to 4pm

Friday

9am to 4pm

Saturday

CLOSED

PLEASE NOTE:

You can visit the Cue Heritage Discovery Centre from 10am to 2.30pm Monday to Friday.