

THE **DRYBLOWER**
AUGUST 2022



Cue's only dedicated news resource on
what's happening in and around Cue.



A not for profit community newsletter
produced and distributed by the Cue
CRC.

All editions are available
electronically via cue.crc.net.au or
cue.wa.gov.au.

DISTRIBUTION OUTLETS

Cue CRC
Shire of Cue
Queen of the Murchison B & B
Murchison Club Hotel
Cue Tourist Park
Cue Roadhouse

ADVERTISEMENT PRICES

SIZE	B & W	COLOUR
Full Page	\$30.00	\$60.00
Half Page	\$15.00	\$30.00
Quarter Page	\$10.00	\$15.00

DISCLAIMER

The information and personal views in this publication do not necessarily reflect the views of the Cue CRC or its employees. No liability shall be incurred for any omissions or errors in published articles or contributions. This publication is produced and distributed by the Cue CRC and any complaints should be directed to the Cue CRC

CONTACT DETAILS

Cue CRC
72 Austin Street
PO Box 83
Ph: 08 9963 1198
E: cue@crc.net.au

All contributions are due by the
25th for publication on the 1st.

Unable to collect your copy of The Dryblower?
Fill in the form below and send with your remittance.

NAME: _____

ADDRESS: _____

SUBSCRIPTION: _____ \$26.40 per year (this is for the cost of postage only)

RECYCLE



**Bring your used ink cartridges down to the
Cue CRC to be recycled.**

For more info contact the Cue CRC on
Ph: 9963 1198 or E: info@cuecrc.net.au

CUE CRC

Hello Cue,

In July we've seen an influx of visitors through the Cue CRC and the Heritage Centre, which is great for our town. We've had over 700 tourists visit the CRC. The CRC is opening on Saturdays now, through the rest of the tourist season.

The Sunday Markets in July had 6 stalls with a heap of visitors come down to purchase things from our stall holders. All stall holders did really well at the markets and we hope to see them all back next time. Our August Sunday Markets will be held on the 28th, if you would like to book a stall, please contact the Cue CRC.

We had our usual weekly craft group at the CRC every Wednesday morning. Unfortunately, as some of you know Department of Transport were unable to visit in July, but they will be at the CRC on August 8th.

We also did our second Cricut Craft Workshop of the 10th of July which was really well received, with about 7 crafters attending. I've got some more ideas for the Cricut Craft Workshops—hopefully we'll do at least 1 more this year. Look for the advertisements in the Dryblower, or contact the CRC for more information.

With Father's Day coming up in September, come into the CRC to check out some great new products we have in store that might be of interest as gift ideas.

Julie Humphreys

Manager





Cue Heritage Discovery Centre



How Cue Got its Name

In 1891 Mick Fitzgerald and Tom Cue set out in search of their fortune. After striking gold on Coodardy station, Tom Cue travelled to Nannine to register their claim and sell their find. Meanwhile, Fitzgerald had remained to prospect at an area that would later be called Dead Finish. Acting on a tip from an Aboriginal man named Governor, Fitzgerald headed east on New Year's Day 1892. Almost immediately upon arriving he unearthed large gold nuggets near where Austin Street is now. Some nuggets just lay in the dirt.

Cue soon joined Fitzgerald and another man, Heffernan, at this new patch but it wasn't long before he returned to Nannine for the reward claim. Men from all around the district learned of the lucrative new field and hurried to Cue's Patch. A new gold rush had begun and Cue became the town's namesake. Other gold hunters soon arrived.

Even today there is very little known about Tom Cue. In 1894 the Murchison Times described him as a fine burly fellow nearly six foot tall. The only known picture of Tom came in 1991 when a couple were fossicking for gold near Cue and found a metal printers plate with an illustration of him filling his pipe.

While almost unknown in his home state of Victoria, Tom Cue is one of the legendary figures of the Western Australian goldfields and particularly in the Murchison district. His name is as well known as Paddy Hannan who found gold in Kalgoorlie and Arthur Bailey and William Ford of Coolgardie fame.

**DID YOU
KNOW?**

Nearly all the gold on Earth came from meteorites that bombarded the planet over 200 million years after it formed.

The CHDC is always looking for more heritage items to add to the displays. All donated items will be greatly appreciated and well cared for. Here are a few items we are particularly looking for.

- Complete Codd (marble) bottles
- Pocket watches / old clocks, bakelite clocks, travel clocks, dome clocks
- Set of assay scales and weights
- Imperial weights and measures

"CUE" & A

ABOUT OUR LOCALS

Harry Casey

Partner's name: Jacqueline

Occupation: Projects and airport manager - Shire of Cue

Last thing done before sleep: Talk to my partner

What's on my bedside: Phone

Fav food: Sponge cake

How long have I lived in Cue: 5 years

Fav things to do in Cue: Volunteering Fire and Ambos

Pets: Dog - Mr Rolly Mac

Favourite TV show: Banana Splits

Favourite Movie: The Castle

AFL or Sports team: V8 Supercars

Favourite beverage: Lemon lime and bitters

Hobbies: DIY Projects

Fav holiday spot: Doubtful Island Bay W.A

The first thing you'd buy if you won lotto: I have all i need



"CUE" & A
ABOUT OUR LOCALS

Any guesses as to
who will be in
the next
segment?



9963 1198
info@cuecrc.net.au

FROM THE CEO

The Tourist Park has seen a large increase in visitors staying during July. We have received lots of positive feedback from the visitors with regards to the Tourist Park being well maintained and enjoyed the friendly welcome they received. We would like to extend a warm welcome to our new Tourist Park Managers Michael, Savannah and family. They commenced on the 25 July.

The Shire of Cue engaged Dragonfly Media to film and produce our entry for the "Showcase in Pixels". The annual exhibition of artwork from Local Governments will be displayed on the iconic 45-metre high digital tower at the heart of Yagan Square in Perth City. The footage taken will also be utilised for promotion of Cue through other media platforms.

Another successful Sunday Markets were held on the 24 July where about 50 people enjoyed browsing the various stalls. Dragonfly Media also filmed the markets which captured some great community interaction that will be utilised for future promotion to showcase our region.

Some Shire roads are still awaiting repairs following damage caused by a rain event in late March. Road users are asked to take care when travelling, particularly at flood crossings. Please drive to the road conditions and observe any traffic directions.

Roadworks are ongoing 1km south of town on the Great Northern Highway. It is expected that these will be completed in the coming weeks. Westgold are modifying and improving the intersection where the Miners Pass Road meets the highway. Traffic management and reduced speed limits are in place. Travellers can expect minor delays.

Members of STORMCO (Service To Others Really Matters Company) have been in Cue from 2 to 10 July to present their school holiday programs. They hosted a Kid's Club at the Shire Hall from 9.30am to 12.30pm each weekday with activities and snacks provided. A barbeque was hosted on Wednesday afternoon with activities and they conducted some community service within the town undertaking odd jobs. The effort put in by this group over many years is outstanding and I thank Rainer and the team for visiting again this year.

At the ordinary meeting of Council held on 19 July 2022, Council set the rate in the dollar for all categories of rateable properties within the Shire. Due to the requirements of the *Local Government Act 1995*, the Differential Rates set must be approved by the Minister for Local Government. Once approval has been granted, the 2022–2023 financial year budget will be finalised for adoption by Council. Rate notices will be sent out shortly after. The Shire has undergone revaluations, conducted by the Office of the Valuer General, for all rate categories except the UV pastoral rates category that was revalued in 2019. The revaluations will cause fluctuations in individual rate assessment notices. However, Council has set the rates in the dollar to create an average of 3% increase across all rate categories. Rate payers that wish to lodge an objection to their new valuations can do so by following the instructions that are provided on the back of the rates notice.

Dog owners are reminded of their obligations to keep their dogs contained within the boundaries of their property or on a leash while walking. Please be considerate of others as it can be quite confronting to be approached by an unknown dog while out walking. The Shire Ranger visits the area frequently and will take action against unrestrained dogs in public places. This may result in a financial penalty to the owner and potential destruction of offending animals. The only authorised area within the townsite where dogs are permitted to be exercised off-leash is the town oval. It is your responsibility to control and look after your pets.

Upcoming events:

- August 19 - Astro Tourism Star Gazing Evening, at the Cue Town Hall
- August 20 – Portia Clark, The Women of our Time concert, at the Murchison Club Hotel

Richard Towell
Chief Executive Officer, Shire of Cue

Next ordinary Council meeting - 6:30pm Tuesday 16 August 2022

VOTE 1

MEROME BEARD

CANDIDATE FOR NORTH WEST CENTRAL



Merome Beard
North West Central

Hon Mia Davies MLA
Leader of the The Nationals WA

Hi, I'm Merome Beard, but most people call me Mem. I'm your Nationals WA candidate for the North West Central by-election.

My family and I have a long connection to the region, and we call Carnarvon home. It's where my husband and I run our business the Port Hotel for nearly 20 years, raised our kids and volunteered in the community.

As a fourth generation local, raised in the region and a proud School of the Air graduate - I know first hand what makes this region great. Whether you live in the Gascoyne, the Pilbara or the Murchison, I understand the issues, challenges and opportunities across North West Central.

The Labor Government is failing to tackle important issues to you such as health services, crime, housing, staff shortages and the cost pressures of doing business and living.

Meanwhile they've decimated regional representation in Parliament and under spent in regional WA, all while boasting a \$5.7 billion budget surplus.

That's why I'm asking for your support, so I can continue to take up the fight in Parliament on your behalf.

Thanks, *Mem!*

"Your vote can send Mem to Parliament to be the strong voice your community needs - part of the team dedicated to regional WA. She's the right person for the job."

Hon Mia Davies MLA
Leader of The Nationals WA



MeromeBeardforNWC @merome.beard
 0476 040 696 merome.beard@nationalswa.com
 www.meromebeard.com.au

THE NATIONALS
for Regional WA

Authorised by Paul Dixon, 39 Gascoyne Road, Carnarvon WA 6701

Portia Clark

*'Women of Our Time'
Regional WA Tour*



Saturday 20 August
Murchison Club Hotel Cue

Free Entry
portiaclarkmusic.com



POLICE BEAT

Hello Cue

I am again please to report little crime in Cue over the past month or so. Unfortunately, we do have the occasional visitor to town who commits crime affecting all of our safety. We do have some strategies to deal with those people and are pro-active in keeping them out of town when we can.

One of the things you can do to help yourself is to take steps to ensure your own safety and that of your property. Best if we can keep offenders out of your belongings so things like locking the toolbox on the back of your ute, putting security screens on your doors and windows makes it harder and maybe even installing CCTV so we can identify the offenders if they do get in, all help.

We have been lucky to secure a new officer to assist in Cue permanently and we hope he will arrive late August or September. We'll introduce him when he arrives but he comes highly recommended and from a country policing background.

There have been a couple of incidents of speeding and reckless driving recently in town and we have caught up with a couple of people responsible. The speed limit on all of the roads in the townsite is 50kph. There is a bit of tendency for people to speed along Robinson street when heading west out of town past the industrial area. You may have noticed the patrol car sitting on the hill. We're not having a coffee eating donuts, we are checking speeds and you might get unlucky and cop a fine if you're not watching your speed. And for those people that think cutting up in town is a good thing, we'll catch up and you'll lose your car for 28 days or possibly forever if you don't have \$4K handy to pay the impound bill. Fair warning given.

The Shire and DFES put on a Local Emergency Management Committee Aircrash Scenario Training earlier in the week in which I'm sure all agencies gained a great deal of insight in to how other agencies work. What it also showed us is that the Agencies and the people of Cue need more skilled and trained volunteers in those emergency situations. Please consider having a chat to the SJA or DFES volunteers if you think that's something you might be interested in.


Thanks for your time.

Mark, Pete and someone else soon.

IF YOU'RE NOT SAFE TO BE AROUND, REACH OUT.

THERE'S NO PLACE FOR
DOMESTIC VIOLENCE

**HELP IS HERE
CONTACT MENSLINE**

  **1300 78 99 78**

MENSLINE.ORG.AU



Australian Government



Craft Group

Every Wednesday 9:00am

At the Cue CRC
Morning Tea Provided

For more info please contact the Cue CRC on
ph: 9963 1198 or email: info@cuecrc.net.au



SUNDAY

Markets

August 28th



**Starting at about 9.30am
at 72 Austin Street, Cue**

Contact the Cue CRC to book a stall:

08 9963 1198

info@cuecrc.net.au

CUE PRIMARY SCHOOL

RESILIENCE:RESPECT:RESPONSIBILITY

I AM SO HAPPY TO BE BACK!!!!!! It has been so awesome to be welcomed back to Cue by the community and to see our wonderful students again.

At the end of last term, Miss Adams, Ms Dianne and Miss Sydney all left Cue Primary School. We have been very lucky to secure the services of Mr Ben Air for our upper primary class this term and Mrs Cath Marett will be joining us as a teacher for the rest of the year.

As part of our long term planning we started last year, we are looking to expand our service and give our high school age children an education close to home with clear pathways to employment or further study. We will be starting slowly with Year 7 to 9 students, being careful to give them an individualised plan to enable them to leave Cue PS as confident, skilled young adults. Mrs Mel Montgomery has been given the responsibility of setting this up and supervising the on line learning. Mrs Mel and myself will be contacting parents in town soon to discuss what we can offer your child. We will also be contacting businesses in Cue looking for support.



Employment Opportunity:

Cue Primary School is currently looking for a school chaplain. This does not have to be someone with a religious affiliation but minimum requirements are:

All chaplains/Pastoral Critical Incident Response (PCIR) chaplains are required to hold or be working towards one of the qualifications below:

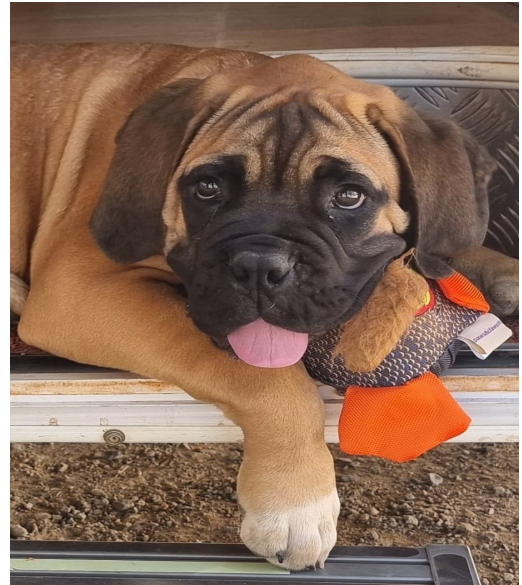
- a Certificate IV in Youth Work; or
- a Certificate IV in Pastoral Care; or
- a Certificate IV in Chaplaincy and Pastoral Care; or
- an equivalent qualification (refer 1.2) which must include competencies in 'mental health' and 'making appropriate referrals'.

This position is for two days a week and involves work with the community as well as our students.



Last Sunday, Cue Primary participated in the Cue Markets with a cake stall. As I didn't think it fair to charge for my cooking, all cakes were free, but we received wonderful donations from the community for our students to attend camp toward the end of term. Thank you very much. We are looking forward to exploring the Mount Gibson Sanctuary near Payne's Find.

Kora and I have been joined by Kobe for our morning walk to collect our students. Kobe is an 8-month old Mastiff who loves cuddles, food and sleeping. I have been surprised that he has kept up with the kids.



Friday 29th July was National School Tree Day and we planted a few saplings to help green our environment while students learned about how important trees are for maintaining life. On Country learning and sustainability will become a part of every day at Cue PS as our students learn about the world around them. We look forward to partnering with our community to share the wealth of knowledge you have to younger minds. A special thank you to Mr Money who has been providing scrumptious mandarins for our morning teas maybe we should plant our own as they grow so well here in Cue.



TERM 3 DATES

Friday 9th September
 Saturday 6th August

- Teacher only day at school
- Murchison Marlu Junior Football League bounces off in Cue. Come and enjoy the watching the little ones chase a ball around the Cue Oval.

Date to be confirmed

- Upper Primary camp to Mt Gibson Sanctuary

A very **BIG THANKYOU** To Karen, Muriel, Rae and Sue

Without these lovely ladies our OP SHOP would not have been able to open over these last two or three months.

Lori and I will do our best to open the shop on Tuesdays and Saturday mornings. If there is anyone who could volunteer a couple of hours on Tuesdays we would be most grateful.

The money we make goes to help keep our Ambulance running and the Royal Flying Doctors flying in our Community.

Jenni Dennis
0438280947





The Online Hub for Family and Local History in the Central Goldfields of Western Australia



Discover more about people's lives in the Central Goldfields of Western Australia or explore more about the history of places in this vast region. FREE resources and information for all family and local history researchers.



Western Australian Virtual Miners Memorial

An online place where the men and women of Western Australia who have lost their lives in the mining industry, can be remembered and honoured for their supreme sacrifice.

The Outback Family History website:

www.outbackfamilyhistory.com.au

Our library of information and photographs

The Outback Family History blog:

www.outbackfamilyhistoryblog.com

Stories of people and places

WA Virtual Miners Memorial website:

www.wavmm.com

A profile page for every person

 @OutbackFamilyHistory | Email: moyasharp@westnet.com.au



WANTED

HOUSE TO BUY!

Looking to buy a house in Cue.
If you are thinking of selling please
give Neil or Mel a call on
0407 490 947.
Thanks!



FATHER'S DAY GIFT IDEAS





Father's Day is just around the corner!





GAME ON!

Auskick and Junior Footy is starting in Cue from Saturday 5th August. Let all support our kids, get them smiling and moving. Registrations are now online. (please see following page)

START TIMES

9:30- 10:30 **Pre-Primary** - Year 2 Auskick

9:45 **Junior AFL** - Year 3 - 6 (GAME START 10.30)

Please note: Teams will be randomly selected each week and we encourage all to work together to give our kids the best AFL experience possible.

If you are interested in coaching, umpiring or volunteering please register as well.

Coaching course coming up soon.

Contact: Neil Montgomery or Tracy Bachraty

Follow us on :



MURCHISON FOOTBALL LEAGUE

How Do I REGISTER FOR FOOTY IN 2022

Brand New Participant

1

FIND YOUR CLUB

Your club may send you a direct link to the 2022 registration form or have the link available on Social channels / website
Otherwise, you can search for the club you wish to register for at www.playhq.com
Click on the REGISTER Tab to find your registration options & Click GET STARTED

2

CREATE AN ACCOUNT

If you do not have an account, click on the CREATE AN ACCOUNT button & fill out your personal details

3

FILL OUT THE REGO FORM

You will have the option to register yourself, or add dependants (linked to your account)
Choose your Role (Player / Team Manager or Volunteer) and answer all the required Questions

4

PAYMENT & SUBMIT

You will see a summary of the registration fees & If your club takes payments through the registration form, you will see the option to pay securely via Credit Card.

To Finalise, Click SUBMIT REGISTRATION

CONTACT US

Email: clubhelp@afl.com.au Call: 1800 PLAY AFL (1800 7529 235)



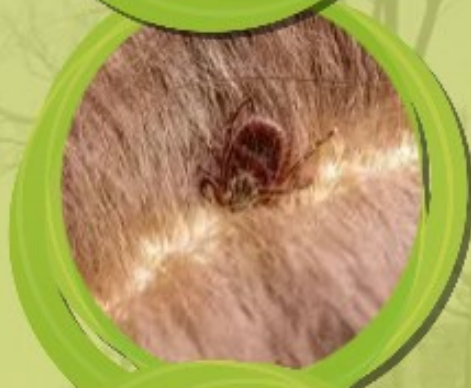
ENVIRONMENTAL HEALTH

Yulella can assist you with:

- Rubbish collection (Needs to be ready)
- Leaking taps & basic plumbing repairs
- Parasite Control Treatments
- Whipper snipping around septic tanks
- Removing rubbish from Community
- Cockroach baits
- Mice traps
- Removal of stray animals
and more!

We also have free soaps, sanitisers, and emergency relief frozen meals available!

Please call Reception on 9980 1339 for enquiries or to request these services



CUE GARDEN GROUP

**Wednesday 10th AUGUST 10am
at Maxine's house,
Simpson Street.**

**Bring a snack and we'll have a cuppa
& try to solve some of the mysteries
of gardening.**

**Anyone with local seed or plants
is welcome to swap.**

**For more information contact Wendy
on 9963 1312.**



RADIO AUCTION 2022 SUNDAY 30th October

9:00 am – 3:30 p.m.

Listen in to



CALL
Ph: 9965 4888



**QUEEN OF THE
MURCHISON PACKAGE
ALL DAY AUCTION ITEM
VALUE \$1726**

- Bell & Co
- Cue Tourist Park
- Cue Roadhouse
- Fenix Resources
- Murchison Club Hotel
- Queen of the Murchison Guest House & Cafe'
- Refuel Australia
- Shire of Cue

**FIND YOUR A3 LIFT OUT
IN THE
GERALDTON GUARDIAN
Friday 28th October 2022**

Contact: M: 0419 854 413

E: radioauctionrcog@gmail.com



Geraldton Community Bank® Branch





THANK YOU

On Sunday 30th October 2022 through the sponsorship and support of Telstra, the Geraldton Guardian, Bendigo Community Bank and Triple MM 98.1FM radio, Rotary present their 31st Rotary Radio Auction, broadcast "LIVE" from the Geraldton Telstra phone room, 9am – 3.30pm, by the team from TripleMM FM.

A huge "Thank You" to the generous Murchison Gascoyne businesses for their continued support of our "Queen of the Murchison Package" is pledge. In its fifth year this package has been a great drawcard to our auction. It is because of the generosity of so many, Rotary are able to continue supporting those in need both in the community and beyond.

Our "Queen of the Murchison Package" is a great way of bringing new people to Cue, a collection of varied business' coming together and a great promotion on our regular radio talk backs too and plenty of Facebook promotion in the lead up to the big day.

Check out the four-page Rotary Radio Auction A3 Lift out in the Geraldton Guardian on Friday 28th October for a listing of all the items. The number to call on the day is 9965 4888.

Should you be interested in the auction please call Di M: 0419 854 413 or email E: radioauctionrcog@gmail.com

Sincere thanks to

Bell & Co., Cue Road House, Fenix Resources, Murchison Club Hotel, Shire of Cue / Cue Tourist Park, & Queen of the Murchison Guest House & Refuel Mt Magnet



Community Bank
Geraldton



PL9934 | GF6916 | BF7329



PLUMBING & GAS

SERVICING MID WEST & GOLDFIELDS REGIONS

MINING | COMMERCIAL | RESIDENTIAL | INDUSTRIAL

24/7 EMERGENCY

PH : 0416 307 843 | ADMIN@LEISKHYDRAULICS.COM.AU

Mount Magnet

GEM'S OUTBACK DINER

☕ Opening Hours:

Tuesday to Friday

7.30am to 2pm

Saturday

7:30am to 12pm

☕ **New menu plus
old favourites**

**Takeaways - fresh & frozen
Catering all year round
Lunch preorders welcome**

Call 0417 101 450 for more info

Community Craft

Community Craft at Cue Primary School! Please join us from 12:30pm - 2:30am every Tuesday. We will be enjoying afternoon tea and a yarn. All welcome



STAY & PLAY

Stay & play on at Cue Primary School! Please join us from 12:30pm - 2:30pm every Thursday. This is for children (0-4) who are unable to attend school and must be accompanied by an adult. We will be enjoying afternoon tea and organised play.



Agent

At a Services Australia Agent you can:



use our computer to access my.gov.au and other government programs and services and to search for jobs



use the telephone to access our self service options or speak to us



access free Wi-Fi 24/7 to connect to government services. No password required



scan, fax and photocopy documents



have your confirmation of identity documents certified



lodge forms or pick up brochures

Agents can:

- respond to general questions on payments and services
- show you a quick and easy way to do your business using self service
- help you complete forms and other paperwork, and
- arrange referrals to specialist services.

Agents can't:

- make, review, assess or vary your payments, or
- issue Electronic Banking Transfers (EBTs), concession or Medicare cards.

Agents aren't Services Australia staff.

Your local Agent is:

Cue Community Resource Centre

Address:

72 Austin Street

Cue WA 8640

Hours of business:

Monday to Friday

9.00am to 4.00pm

To find other Agent locations go to servicesaustralia.gov.au

Self service

You can use your myGov account to access your Centrelink, Medicare and Child Support online accounts. Go to my.gov.au

You can also access our services through the Express Plus mobile apps.

For more information go to servicesaustralia.gov.au/selfservice

Centrelink phone self service

Phone self service 136 240

To report your income and changes to your circumstances 133 276

How to contact us

Go to servicesaustralia.gov.au for more information about payments and services or call the listed '13' or '1800' number most relevant to your situation.

ABSTUDY **Freecall™ 1800 132 317**

Assistance for Isolated Children 132 318

BasicsCard balance enquiry **Freecall™ 1800 057 111**

Centrelink debt repayment **Freecall™ 1800 076 072**

Child Support 131 272

Disability, Sickness and Carers 132 717

Families 136 150

Farmers and their partners 132 316

Financial Information Service 132 300

For information in other languages:

• Centrelink 131 202

• Medicare and Child Support 131 450

Grandparent Advisers **Freecall™ 1800 245 965**

Income Management and BasicsCard **Freecall™ 1800 132 594**

Indigenous Call Centre **Freecall™ 1800 136 380**

Indigenous debt repayment **Freecall™ 1800 138 193**

Job seekers 132 850

Low Income Health Care Card 132 490

Medicare 132 011

Medicare Aboriginal and Torres Strait Islander Access Line **Freecall™ 1800 556 955**

National Redress Scheme **Freecall™ 1800 737 377**

Older Australians 132 300

Students and trainees 132 490

TTY* enquiries Freecall™ 1800 810 586

Complaints and feedback **Freecall™ 1800 132 468**

Call costs from your home phone to a:

• **13 number** from anywhere in Australia may vary depending on the call plan you have chosen from your telephone service provider—mobiles may incur a higher charge.

• **1800 number (Freecall™)** are free—calls from a public phone and mobiles may be timed and charged at a higher rate.

* TTY is only for people who are deaf or have a hearing or speech impairment. A TTY phone is required for this service.



Australian Government
Services Australia



servicesaustralia.gov.au

BELL & CO (EMPORIUM) LIQUOR—GROCERIES



49 Austin St, Cue W.A. 6640

OWNER /MANAGERS
Ross & Pix Pigdon

*Please let us know if you are not happy
with our service*

Shop Hours

Monday—Friday: 9 am — 1.00 pm
Monday—Friday: 3.30pm — 6.00 pm
Saturday: 9 am — 12.00pm
Sunday: Closed
Public Holidays: to be advised

Agents For:

All Evaporative Air Conditioning Parts
Coerco Water Tanks & Agriculture Products
Mt Magnet Meats
Toll Ipec
Firearms Dealer

Phone: 08 99631012
Fax: 08 99631370
Pix Mobile: 0428508090
Mobile: 0427864165 (Toll Ipec)
email: bellcoptyltd@bigpond.com.au

**MOUNT MAGNET
MEATS**



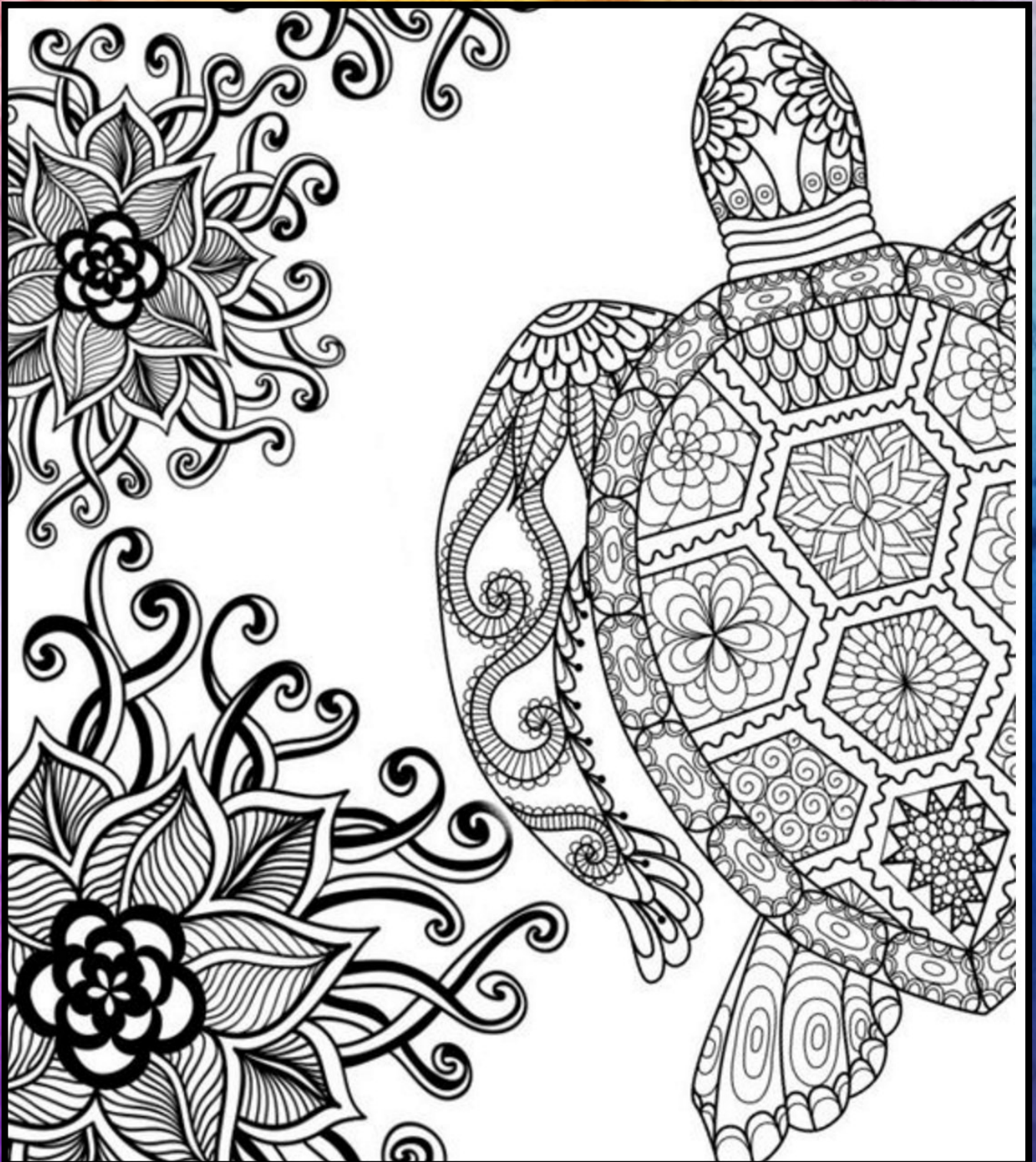
**The only FRESH PRODUCE
BUTCHER in the Mid West**

Open
Monday - Friday
9am - 5pm
&
Saturday
9am - 12pm

76 Hepburn St (Main Street) Phone / Fax 9963 4195

*Pleased to meet you
with meat to please you*

COLOURING PAGE



COLOURING PAGE



LOGIC PUZZLE

		first names					beers					wedding gifts				
		Carl	Gracie	Jorge	Keegan	Rosa	bitter	dark lager	pale ale	pilsner	stout	blender	cutlery set	dining table	juice press	toaster
orders	first															
	second															
	sixth															
	seventh															
	ninth															
wedding gifts	blender															
	cutlery set															
	dining table															
	juice press															
	toaster															
beers	bitter															
	dark lager															
	pale ale															
	pilsner															
	stout															

CLUES

- The person who received the juice press is not Jorge and the person who received the toaster doesn't drink dark lager or bitter.
- The person who received the blender is not Carl and the pale ale drinker is not Rosa.
- The one who is first in line did not receive the dining table and the one who is ninth in line is Keegan.
- Either the person who received the toaster or the person who received the cutlery set is Gracie.
- The pilsner drinker is closer to the front of the line than Jorge and Keegan is farther down the line than Carl.
- Gracie is closer to the front than the person who received the juice press.
- Of the person who received the toaster and Keegan, one is second in line and the other drinks stout.
- The one who is seventh in line doesn't drink bitter and the person who received the cutlery set is not Keegan.
- The 5 people were the person who received the the blender, Gracie, the dark Lager drinker, the one who is ninth in line, and the person who received the juice press.

WORD SEARCH

R	S	T	I	M	O	Z	R	E	G	A	W	C	S
E	C	N	A	N	E	P	E	O	N	S	Y	L	F
I	Q	E	V	I	C	T	N	E	W	E	R	O	F
C	S	L	E	N	D	E	R	A	L	L	O	C	R
I	N	M	O	U	R	N	U	O	W	T	V	K	E
P	C	O	T	H	A	T	T	E	S	T	I	U	I
S	I	D	I	O	M	R	S	A	Y	I	N	G	G
F	R	E	T	S	E	I	L	L	I	H	S	N	H
D	O	F	P	T	Y	E	V	A	E	W	I	E	T
E	E	I	A	E	O	S	W	C	I	G	A	W	S
K	T	N	T	D	V	C	K	P	G	R	A	N	N
N	E	E	I	B	N	L	E	O	T	L	S	B	M
I	M	P	O	S	E	S	F	A	L	S	I	T	Y
K	E	L	D	D	U	H	O	S	N	O	B	S	H

Attest

Bagel

Clock

Collared

Define

Entries

Envoy

Evict

Falsity

Fogging

Foots

Freights

Frets

Heart

Heckled

Hilliest

Hosted

Huddle

Hymns

Idiom

Impose

Ivory

Kinked

Lairs

Meteoric

Metros

Mourn

Newer

Noisy

Ocean

Omits

Patio

Penance

Peons

Saying

Slender

Snobs

Spicier

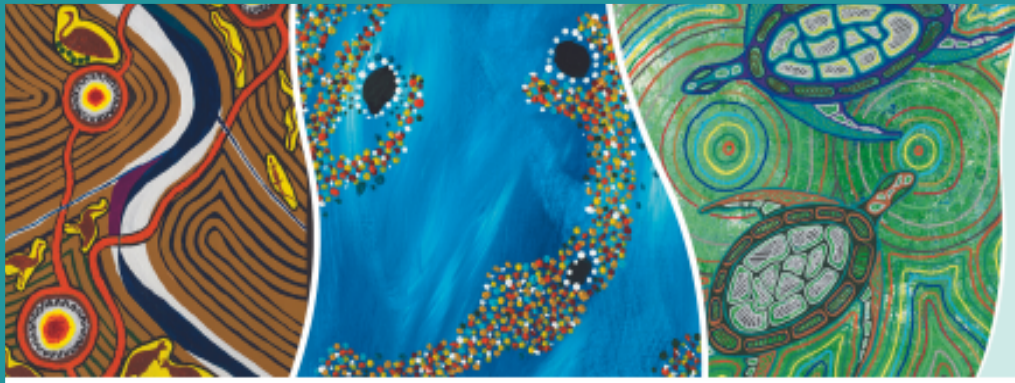
Swipes

Turner

Wager

Walls

Weave



**Roll up
for WA**

COVID-19 Vaccination

COVID-19 vaccination clinic

Cue

Cue Shire Hall - 54 Dowley St, Cue, 6640

Wed 10 Aug, 2022
10:00am - 2:00pm

Keep up to date with your COVID-19 vaccinations and if eligible get your Flu vaccine at the same time!

Had COVID-19?

Updated advice from ATAGI now recommends that you wait **THREE MONTHS** after a confirmed COVID-19 infection, then receive your next COVID-19 vaccine dose as soon as possible.

Get your free COVID-19 vaccine dose or booster (if eligible) to ensure you have the best protection against COVID-19. Child and adult COVID-19 vaccines are available. Medicare cards are not needed to get vaccinated.



We acknowledge the traditional owners of the land and pay our respects to their Elders, past, present and emerging.



Government of Western Australia
WA Country Health Service



Government of Western Australia
WA Country Health Service

Flu season 2022

Influenza vaccination

Influenza (flu) is moving quickly through Western Australia and making people really sick.

Getting the flu vaccine is the best form of protection against serious illness and is available at Cue Nursing Post.

Please call (9963 0100) or drop into the clinic in Cue, Monday - Friday, 8am - 4pm, to get yourself and your family immunised.

The friendly team can also give you information and advice on how to stay safe and well this flu season.

Get in touch :

Cue Nursing Post

7 Victoria Street

Cue WA 6640

Telephone: (08) 9963 0100

Facsimile: (08) 9963 0150

www.wacountry.health.wa.gov.au



**Photo taken before mask wearing requirements*

EMERGENCY CONTACTS

EMERGENCY SERVICES - 000
Health Direct - 1800 022 222

NON-EMERGENCY
Police - 131 444
Nursing Post - 9963 0100

If you are feeling unwell, things to consider:

Nursing Post open Mon - Fri 8am to 4pm.

Nearest hospital is 120km away in Meekatharra.

The ambulance service in Cue may require the assistance of volunteers from Meekatharra or Mt Magnet to attend your call.

Cue is a remote community, be proactive, attend to your medical needs ASAP.

NURSING POST



August 2022

RFDS:

Tuesday 2nd
Tuesday 16th
Tuesday 30th

GRAMS:

Please contact the
Nursing Post

Dates were correct at time of print.
Please contact the Nursing Post to
confirm dates (08) 9963 0100.

EMERGENCY SERVICES

Fire & Rescue, Ambulance & Police

In case of emergency please call

000

LIST 46 WORDS

1
2
3
4
5
6
7
8
9
10
11
12
13
14
15
16
17
18
19
20
21
22
23
24
25
26

S	P	R	E	A	D	S	H	E	E	T	O	R	W
N	O	I	T	A	R	G	E	T	N	I	S	I	D
S	A	D	L	Y	K	X	M	A	O	U	R	T	E
E	F	S	R	G	C	I	W	P	M	Y	R	E	J
H	I	G	S	E	R	D	A	I	E	G	E	P	E
S	N	O	R	E	H	I	R	C	A	S	O	D	C
A	I	P	S	Y	N	O	M	N	G	T	U	D	T
M	T	H	S	L	I	T	S	A	L	A	O	K	E
S	E	I	E	R	H	I	C	M	A	P	P	E	D
M	I	S	M	A	T	C	H	E	S	L	B	E	O
L	S	S	R	E	P	P	O	C	R	E	G	L	I
E	J	O	D	D	R	S	N	C	A	R	L	X	L
H	B	R	U	B	U	S	E	R	O	E	O	U	Y
I	N	C	H	I	N	G	S	G	H	A	P	C	R

27
28
29
30
31
32
33
34
35
36
37

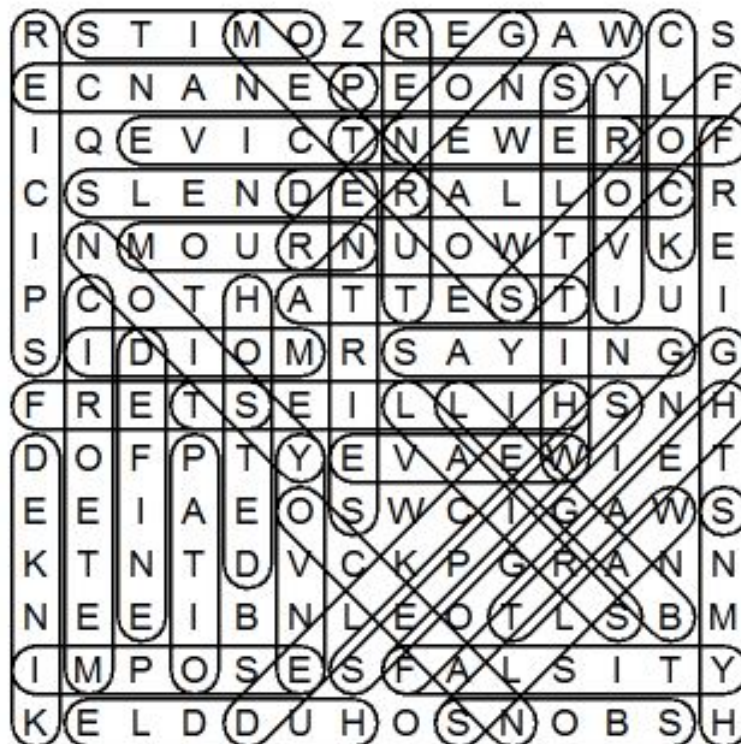
38
39
40
41
42
43
44
45
46

July Puzzle Solutions

JULY LOGIC PUZZLE SOLUTION

anniversaries	names	fruits	vegetables
March 30th	Jose	guavas	rhubarb
April 1st	Erik	kiwi	spinach
May 17th	Darren	oranges	turnips
July 18th	Kayden	strawberries	corn
Sept 30th	Mark	apples	bean sprouts

JULY WORD SEARCH SOLUTION



JULY 45 WORDS SOLUTION

- | | | | | | |
|----------|----------|----------|---------|----------|----------|
| Aches | Built | Eerie | Necking | Skies | Viper |
| Badder | Convey | Exertion | Omens | Skill | Warm |
| Besets | Crown | Fiery | Packs | Stubbed | Weirds |
| Bleed | Deity | Fists | Plots | Tents | Which |
| Bless | Devotees | Fuses | Reddens | Undoings | Worthies |
| Bodes | Doling | Gored | Sagger | Unhook | |
| Boxers | Doted | Hocks | Sheen | Unrests | |
| Breeders | Dressers | Jersey | Silence | Vicious | |



Department of
Transport

Please follow any COVID—19 safety rules the Cue CRC has in place. The rules are in place to keep everyone safe.

DoT Remote Services will be visiting **CUE**



When: Monday 8th August, 1.00pm to 3.00pm

Where: Cue Community Resource Centre

We will be able to help you with the following services:

- theory test
- photo card applications
- driver's licence applications
- change of address
- registration and driver's licence renewals
- vehicle transfers
- return of vehicle plates
- driving assessments

To enable us to help you, please ensure you bring your birth certificate, Medicare card, bank card and two types of proof of residency, along with cash or card for payment.

For enquiries please call: Karen 92168194

Sometimes quicker is better with **DoT Direct**

Whether you're renewing your licence, transferring vehicle ownership or checking your demerit points, **DoT Direct** is quick and easy to use wherever you are.

Start saving time by visiting www.transport.wa.gov.au/dotdirect



Keep up to date with upcoming remote services visits and stories, follow us on Facebook **Department of Transport Regional Services WA** or search **@RegionalServicesWA**

August

SUNDAY	MONDAY	TUESDAY	WEDNESDAY	THURSDAY	FRIDAY	SATURDAY
	1	2 RFDS	3 Craft Group	4	5	6
7	8 DOT	9	10 Craft Group Garden Group VAX Clinic	11	12	13
14	15	16 Council Meeting RFDS	17 Craft Group	18	19	20 Portia Clark
21	22	23	24 Craft Group	25	26	27
28 Markets	29	30 RFDS	31 Craft Group			



<https://www.facebook.com/CueCRC/>