

THE

DRYBLOWER

SEPTEMBER 2022



Cue's only dedicated news resource on
what's happening in and around Cue.



A not for profit community newsletter
produced and distributed by the Cue
CRC.

All editions are available
electronically via cue.crc.net.au or
cue.wa.gov.au.

DISTRIBUTION OUTLETS

Cue CRC
Shire of Cue
Queen of the Murchison B & B
Murchison Club Hotel
Cue Tourist Park
Cue Roadhouse

ADVERTISEMENT PRICES

SIZE	B & W	COLOUR
Full Page	\$30.00	\$60.00
Half Page	\$15.00	\$30.00
Quarter Page	\$10.00	\$15.00

DISCLAIMER

The information and personal views in this publication do not necessarily reflect the views of the Cue CRC or its employees. No liability shall be incurred for any omissions or errors in published articles or contributions. This publication is produced and distributed by the Cue CRC and any complaints should be directed to the Cue CRC

CONTACT DETAILS

Cue CRC
72 Austin Street
PO Box 83
Ph: 08 9963 1198
E: cue@crc.net.au

All contributions are due by the 25th for publication on the 1st.

Unable to collect your copy of The Dryblower?
Fill in the form below and send with your remittance.

NAME: _____

ADDRESS: _____

SUBSCRIPTION: _____ \$26.40 per year (this is for the cost of postage only)

BUBLÉ MEETS
ED SHEERAN

Cue

*Murchison Club
Hotel*

EVAN AYRES

Solo Tour

**SATURDAY
SEPTEMBER 17
6-9PM**



CUE CRC

Hello Cue,

As many of you know, I took some personal leave in August and had an awesome holiday. My fantastic staff took over the CRC for me for two weeks, so I want to thank them for their efforts.

August was another busy month in regards to visitors with almost 800 visitors through the Cue CRC and the Heritage Centre, which is great for our town.

We had only three stalls at the Sunday Markets in August, but it was well attended by people wishing to purchase. We're not going to have markets in September, but hope to have our Twilight Markets in October and November.

We had our usual weekly craft group at the CRC every Wednesday morning. Unfortunately, not many are attending, but that's ok—we'll still have the urn ready for a coffee each Wednesday if you want come and do some crafts.

Department of Transport came on the 8th of August and they were really busy, their next visit is on Tuesday 6th in September and will be here most of the day.

In September we also have Evan Ayres coming to visit again, so if you're interested in seeing some great live entertainment be at the Murchison Club Hotel from about 6pm on Saturday 17th September.

Julie Humphreys

Manager





Cue Heritage Discovery Centre

The CHDC has been very busy with visitors from all over Australia and some from overseas. Including Sweden, Great Britain, Germany and New Zealand. There have been huge numbers of Western Australians visiting Cue as well. They seem to have developed a greater interest in their own state once the borders had been closed and that has continued into this year. Many visitors have said that positive word of mouth has been an enormous factor in them visiting Cue as they would normally have taken the coastal road north.

Since July 1st there have been many visitors with most being in pairs. The CHDC's Visitor Book is quickly getting filled up with approximately 136 comments, all of which have been both positive and encouraging.

The management and staff of the CRC and CHDC welcomes you to pop in when the CHDC is open, which is generally from 10am to 2.30pm Monday to Friday and on Saturdays 10am to 12pm.

Some items we would love to have for our collection:

The CHDC is always looking for more heritage items to add to the displays. All donated items will be greatly appreciated, well cared for and donors acknowledged.

- Hat pins, hats and hat boxes
- vintage combs and hair clips
- Pre-decimal coins and notes, vintage moneyboxes

Sandra Box

Customer Service Officer

"CUE" & A

ABOUT OUR LOCALS



Stephanie 'Steph'

KNOWN FOR: Book worm number plate, coloured hair and work for the shire.

LAST THING DONE BEFORE SLEEP: Check tiktok.

WHATS ON MY BEDS: My to be read pile of books.

FAV FOOD: Apricot chicken .

HOW LONG HAVE I LIVED IN CUE: 5 years in November.

FAV THINGS TO DO IN CUE: Stargaze + taking photos of our beautiful town.

PETS: 2 Cats Dora and Draco - 1 Dog named Luna.

FAVOURITE MOVIE: The Court Jester

AFL OR SPORTS TEAM: Essendon (Bombers)

FAVOURITE BEVERAGE: Coke

HOBBIES: Reading, Cross stitch, Gaming and Photography

FAV HOLIDAY SPOT: Bali

THE FIRST THING YOU WOULD BUY IF YOU

WON LOTTO: A plane ticket to Europe



"CUE" & A

ABOUT OUR LOCALS

Any guesses as to
who will be in
the next
segment?



9963 1198
info@cuecrc.net.au

FROM THE CEO

The town and tourist park are still busy with tourists and travellers stopping to enjoy the attractions of Cue. I hope you enjoy your stay and visit again in the future.

At the August Council meeting, Council adopted the 2022-2023 budget, including the rate in the dollar for all categories of rateable properties within the Shire. Ratepayers should expect to receive their rates notices very soon. Ratepayers that pay their rates in full before 5 October 2022 will go into the automatic draw to win one of three cash prizes.

Astrotourism WA were in cue on Friday 19 August 2022 to celebrate the Square Kilometre Array on behalf of the International Centre for Radio Astronomy Research, with support from the Australian Government Department of Industry, Science, Energy and Resources. The event was held to celebrate Australia as one of the hosts of the world's largest and most capable radio telescopes. The SKA telescopes will revolutionize our understanding of the Universe and be based in Western Australia and South Africa. The night was a family friendly, community stargazing event where we learnt about the universe, stars, black holes and spaghettification. A number of telescopes were set up for viewing the stars and planets, while a sausage sizzle was provided by the Shire of Cue. The hosts provided a telescope that was given away as a prize on the night.

Another successful Sunday Markets were held on the 28 August 2022. Thanks to all the stallholders that contribute to make these community gatherings possible. I encourage anyone interested in being a stallholder to contact Julie at the Cue Community Resource Centre.

Mosquitos are starting to present themselves again and the Shire of Cue will undertake fogging operations when weather conditions allow. Residents are asked to check their properties and remove any potential mosquito breeding areas, by emptying containers holding water, ensuring gutters are not holding water and checking yards for areas that hold water.

Some Shire roads are still awaiting repairs following damage caused by a rain event in late March. Road users are asked to take care when travelling, particularly at flood crossings. Please drive to the road conditions and observe any traffic directions.

Roadworks are ongoing 1km south of town on the Great Northern Highway. It is expected that these will be completed in the coming weeks. Westgold are modifying and improving the intersection where the Miners Pass Road meets the highway. Traffic management and reduced speed limits are in place. Travellers can expect minor delays.

The Murdoch University Vet Program will be returning to Cue on 17 October 2022. Students from the university will be providing free pet checks and sterilisation under the guidance of a senior vet. Other services available include microchipping and vaccination at the owner's expense. Please note that this service is provided by the Shire of Cue and can only be provided to dogs and cats registered with the Shire. Bookings are essential and can be made through the Shire office. For further details please see the notice in this edition of the Dryblower.

Dog owners are reminded of their obligations to keep their dogs contained within the boundaries of their property or on a leash while walking. Please be considerate of others as it can be quite confronting to be approached by an unknown dog while out walking. The Shire Ranger visits the area frequently and will take action against unrestrained dogs in public places. This may result in a financial penalty to the owner and potential destruction of offending animals. The only authorised area within the townsite where dogs are permitted to be exercised off-leash is the town oval. It is your responsibility to control and look after your pets.

Upcoming events:

- Wednesday 12 and Thursday 13 October - Think Mental Health Media Workshop, Cue Town Hall.
- Monday 17 October 2022 – Murdoch University Vet Program.
- Saturday 29 October – Halloween / Op Shop Ball for the opening of the Railway Building as the Youth and Community Centre.
Friday 11 November - Remembrance Day
Friday 18 November - Cue Parliament
- Saturday 9 December – Town Christmas Function

Richard Towell
Chief Executive Officer, Shire of Cue

Next ordinary Council meeting - 6:30pm Tuesday 20 September 2022



PUBLIC NOTICE

Proposed Development Application

The Shire of Cue has received an application to use and develop land for the following purposes and public comments are invited.

Lot Numbers: 582 and 583 **Street:** Heydon Place **Suburb:** Cue

Proposal:

Application to install and operate a renewable energy system comprising of a 200kv solar array which consists of 546 540kv solar panels and a battery power storage system.

The application has been submitted by Hybrid Energy Systems Pty Ltd which has been contracted by Horizon Power to design and install a renewable energy system to reduce the volume of hydrocarbons currently consumed to produce power in the town. Once the system has been installed, Horizon Power will assume responsibility for the facility. Details of the proposal area are available to the public at the Shire of Cue office.

Submissions are invited from any elector or ratepayer with respect to the proposed development. All written submissions should be forwarded to the Shire of Cue - PO Box 84 Cue, WA 6640 by 4.00pm on 23 September 2022.

Richard Towell
Chief Executive Officer

Farmbot's Biggest Ever Giveaway

WIN TOYOTA HILUX 4x4 SR



Wearing out your ute checking water? It is time to park it up.

To reward you on making the change, Farmbot is giving you the chance to win the use of a Toyota Hilux SR (4x4) until June 2025. PLUS, 10 lucky runners up will win Farmbot Prize Packs.

How to win?

Buy Farmbot Monitors and be in the running to WIN. The more monitors you buy, the more chances of winning. Competition ends **18th November 2022**.



Learn more at farmbot.com.au/winaute
or call us on **02 9030 4760**

Call Dalwallinu Traders on 0427 086 738 to order one today.

Entries open at 9am AEST on 15/8/2022 and close at 5pm AEDT on 18/11/2022. Open to Australian residents aged 18 years and over only. Winners will be drawn at 10am AEDT on 22/11/2022 at 15b/390 Eastern Valley Way, Roseville NSW 2069. Winner's names will be published at farmbot.com.au on 22/11/2022. Total prize pool valued up to \$53,787.38. Full terms and conditions available at farmbot.com.au/winaute. NSW Permit No. TP/02047 NTP/04667, ACT Permit No. TP 22/01527, SA Licence No. T22/1161.

VOTE 1

MEROME BEARD

CANDIDATE FOR NORTH WEST CENTRAL



Merome Beard
North West Central

Hon Mia Davies MLA
Leader of the The Nationals WA

Hi, I'm Merome Beard, but most people call me Mem. I'm your Nationals WA candidate for the North West Central by-election.

My family and I have a long connection to the region, and we call Carnarvon home. It's where my husband and I run our business the Port Hotel for nearly 20 years, raised our kids and volunteered in the community.

As a fourth generation local, raised in the region and a proud School of the Air graduate - I know first hand what makes this region great. Whether you live in the Gascoyne, the Pilbara or the Murchison, I understand the issues, challenges and opportunities across North West Central.

The Labor Government is failing to tackle important issues to you such as health services, crime, housing, staff shortages and the cost pressures of doing business and living.

Meanwhile they've decimated regional representation in Parliament and under spent in regional WA, all while boasting a \$5.7 billion budget surplus.

That's why I'm asking for your support, so I can continue to take up the fight in Parliament on your behalf.

Thanks, *Mem!*

"Your vote can send Mem to Parliament to be the strong voice your community needs - part of the team dedicated to regional WA. She's the right person for the job."

Hon Mia Davies MLA
Leader of The Nationals WA



MeromeBeardforNWC @merome.beard

0476 040 696 merome.beard@nationalswa.com

www.meromebeard.com.au

THE NATIONALS
for Regional WA

Authorised by Paul Dixon, 39 Gascoyne Road, Carnarvon WA 6701



Craft Group



Every Wednesday 9:00am

At the Cue CRC
Morning Tea Provided

For more info please contact the Cue CRC on
ph: 9963 1198 or email: info@cuecrc.net.au



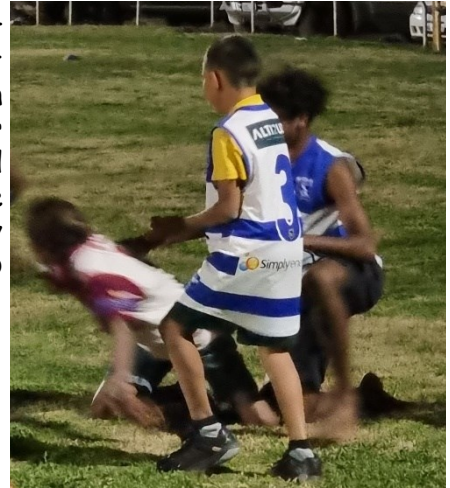
CUE PRIMARY SCHOOL

RESILIENCE : RESPECT : RESPONSIBILITY

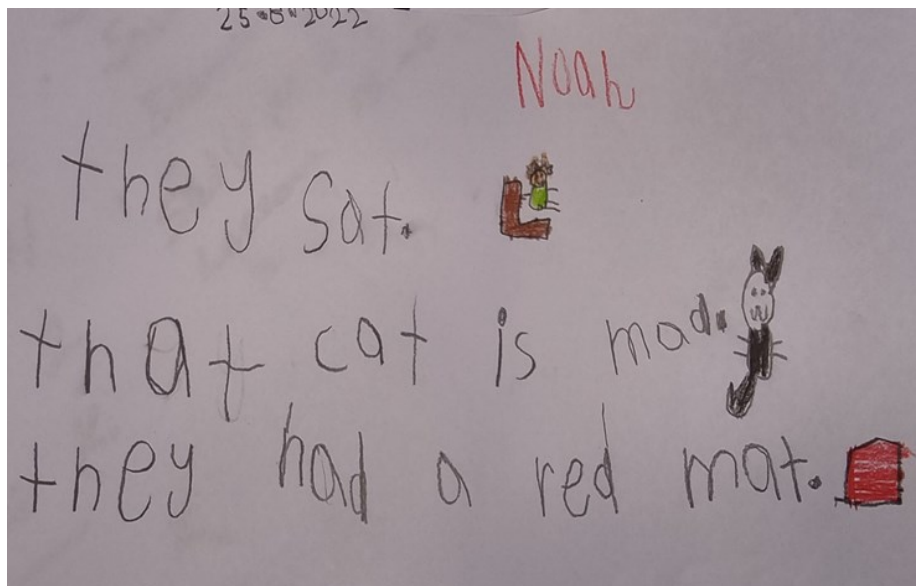
I am so proud of our students! They come to school nearly everyday they are in Cue and they are achieving.

We have such a busy time over the last month with a visit from Camp Quality and the Westcapade cars, the trachoma screening team, Atheltics WA and the Spare Parts Puppet Theatre. Follow us on [FaceBook](#) to see regular updates

Last Wednesday evening, we attended an AFL carnival in Mt Magnet along with Karalundi, Meekatharra, Yalgoo and Mt Magnet. While at the carnival our students were outstanding in the respect they had for themselves and others. Some of our younger boys showed that they have a desire to work hard and constantly chased hard to make sure they were in the game despite playing against fifteen year olds. Reuben walked away with the team award for the night having been fearless going into contact and working hard off the ball.



Home reading has started again, and I have had many comments from visitors about how well our children are reading. With practice, their confidence is building each day and they are making great gains. Reading is the core to nearly all school work and we are also seeing the children's writing and numeracy improve. If you have time to spare, our students would love to read to you on a regular basis. Please contact the school if interested.



Noah's (Pre-Primary) dictated writing. WOW!!!!

I am pleased to say that our final planning is underway for the Room 2 camp to the Mount Gibson Sanctuary at Payne's Find combined with an athletics carnival at Yalgoo. Our cake stalls at the Cue Markets this year have earned our students over \$1000 dollars which will be used for fuel and new camping equipment. Thank you Cue. We will let you know what we learnt at Mt Gibson in the next Dry Blower.

Today we held a Father's Day celebration with Dads joining students to make scrumptious home made pizza and sharing their paper plane making skills. We wish all dads a fantastic Father's day and remind them that spending time with your child is the greatest gift you can give them, and yourself.



TERM 3 DATES

Saturday 3rd September - Murchison Marlu Junior Football League final day of season at the Cue Oval.

Friday 9th September - Teacher only day at school

19th - 22nd September - Upper Primary camp to Mt Gibson Sanctuary

23rd September - Last day of Term 3

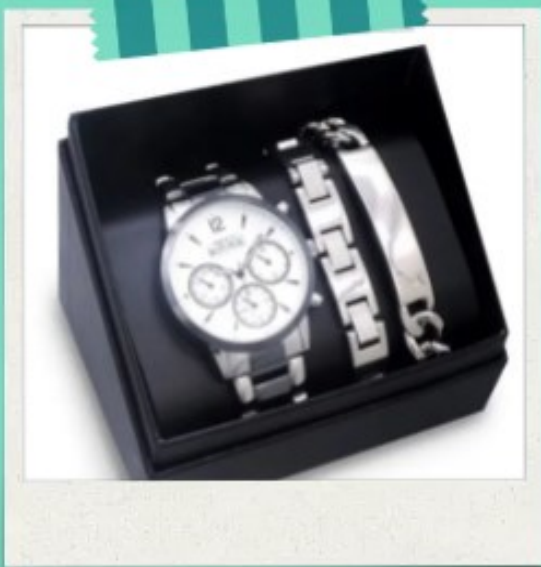
FATHER'S DAY GIFT IDEAS



Cue
Community Resource Centre
Your local connection



Father's Day is just around the corner!



CAMP QUALITY wesCAPADE

We had the pleasure of the Camp Quality wesCAPADE visiting Cue on the 9th of August. The Shire helped facilitate the lunch stop for the group. They came into town with a bellow of horns and a cacophony of color. All parking up at the town hall awaiting the primary school kids to join them. They didn't have to wait long!! The kids were so excited to see all the cars and meet all the people. Each car had a special treat for each of the kids. They had so much fun, I'm sure the whole town could hear their laughter.







GAME ON!

Auskick and Junior Footy is starting in Cue from Saturday 5th August. Let all support our kids, get them smiling and moving. Registrations are now online. (please see following page)

START TIMES

9:30- 10:30 **Pre-Primary** - Year 2 Auskick

9:45 **Junior AFL** - Year 3 - 6 (GAME START 10.30)

Please note: Teams will be randomly selected each week and we encourage all to work together to give our kids the best AFL experience possible.

If you are interested in coaching, umpiring or volunteering please register as well.

Coaching course coming up soon.

Contact: Neil Montgomery or Tracy Bachraty

Follow us on :



MURCHISON FOOTBALL LEAGUE

How Do I REGISTER FOR FOOTY IN 2022

Brand New Participant

1

FIND YOUR CLUB

Your club may send you a direct link to the 2022 registration form or have the link available on Social channels / website
Otherwise, you can search for the club you wish to register for at www.playhq.com
Click on the REGISTER Tab to find your registration options & Click GET STARTED

3

FILL OUT THE REGO FORM

You will have the option to register yourself, or add dependants (linked to your account)
Choose your Role (Player / Team Manager or Volunteer) and answer all the required Questions

2

CREATE AN ACCOUNT

If you do not have an account, click on the CREATE AN ACCOUNT button & fill out your personal details

4

PAYMENT & SUBMIT

You will see a summary of the registration fees & If your club takes payments through the registration form, you will see the option to pay securely via Credit Card.

To Finalise, Click SUBMIT REGISTRATION

CONTACT US

Email: clubhelp@afl.com.au Call: 1800 PLAY AFL (1800 7529 235)



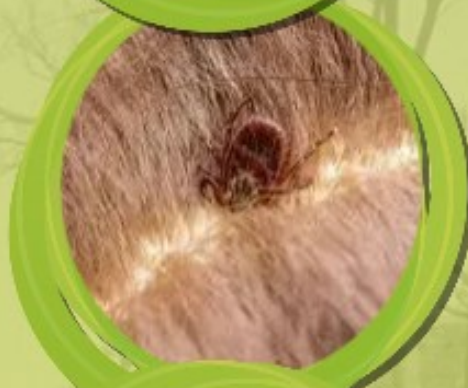
ENVIRONMENTAL HEALTH

Yulella can assist you with:

- Rubbish collection (Needs to be ready)
- Leaking taps & basic plumbing repairs
- Parasite Control Treatments
- Whipper snipping around septic tanks
- Removing rubbish from Community
- Cockroach baits
- Mice traps
- Removal of stray animals
and more!

We also have free soaps, sanitisers, and
emergency relief frozen meals available!

Please call Reception on 9980 1339 for
enquiries or to request these services





FOOD ASSISTANCE

Free Frozen meals available for
Pensioners and Welfare
Recipients



Mon-Thurs 8-12

**CALL YULELLA ON
0899631760
TODAY**

Lot 586 Heydon Place, Cue



Rotary RADIO AUCTION 2022 SUNDAY 30th October

9:00 am– 3:30 p.m.

Listen in to



CALL
Ph: 9965 4888



**QUEEN OF THE
MURCHISON PACKAGE
ALL DAY AUCTION ITEM
VALUE \$1726**

- Bell & Co
- Cue Tourist Park
- Cue Roadhouse
- Fenix Resources
- Murchison Club Hotel
- Queen of the Murchison Guest House & Cafe'
- Refuel Australia
- Shire of Cue

**FIND YOUR A3 LIFT OUT
IN THE
GERALDTON GUARDIAN
Friday 28th October 2022**

Contact: M: 0419 854 413

E: radioauctionrcog@gmail.com



Geraldton Community Bank® Branch



The Geraldton
Guardian



THANK YOU

On Sunday 30th October 2022 through the sponsorship and support of Telstra, the Geraldton Guardian, Bendigo Community Bank and Triple MM 98.1FM radio, Rotary present their 31st Rotary Radio Auction, broadcast "LIVE" from the Geraldton Telstra phone room, 9am – 3.30pm, by the team from TripleMM FM.

A huge "Thank You" to the generous Murchison Gascoyne businesses for their continued support of our "Queen of the Murchison Package" is pledged. In its fifth year this package has been a great drawcard to our auction. It is because of the generosity of so many, Rotary are able to continue supporting those in need both in the community and beyond.

Our "Queen of the Murchison Package" is a great way of bringing new people to Cue, a collection of varied business' coming together and a great promotion on our regular radio talk backs too and plenty of Facebook promotion in the lead up to the big day.

Check out the four-page Rotary Radio Auction A3 Lift out in the Geraldton Guardian on Friday 28th October for a listing of all the items. The number to call on the day is 9965 4888.

Should you be interested in the auction please call Di M: 0419 854 413 or email E: radioauctionrcog@gmail.com

Sincere thanks to

Bell & Co., Cue Road House, Fenix Resources, Murchison Club Hotel, Shire of Cue / Cue Tourist Park, & Queen of the Murchison Guest House & Refuel Mt Magnet



Community Bank
Geraldton





PLUMBING & GAS

SERVICING MID WEST & GOLDFIELDS REGIONS

MINING | COMMERCIAL | RESIDENTIAL | INDUSTRIAL

24/7 EMERGENCY

PH : 0416 307 843 | ADMIN@LEISKHYDRAULICS.COM.AU

WANTED

HOUSE TO BUY!

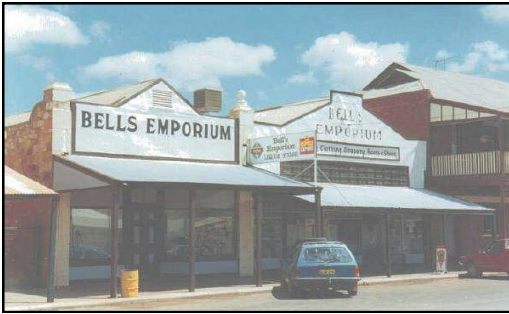
Looking to buy a house in Cue.
If you are thinking of selling please
give Neil or Mel a call on

0407 490 947.

Thanks!



BELL & CO (EMPORIUM) LIQUOR—GROCERIES



49 Austin St, Cue W.A. 6640

OWNER /MANAGERS

Ross & Pix Pigdon

*Please let us know if you are not happy
with our service*

Shop Hours

Monday—Friday: 9 am — 1.00 pm
Monday—Friday: 3.30pm — 6.00 pm
Saturday: 9 am — 12.00pm
Sunday: Closed
Public Holidays: to be advised

Agents For:

All Evaporative Air Conditioning Parts
Coerco Water Tanks & Agriculture Products
Mt Magnet Meats
Toll Ipec
Firearms Dealer

Phone: 08 99631012
Fax: 08 99631370
Pix Mobile: 0428508090
Mobile: 0427864165 (Toll Ipec)
email: bellcoptyltd@bigpond.com.au

**MOUNT MAGNET
MEATS**



**The only FRESH PRODUCE
BUTCHER in the Mid West**





Open
Monday - Friday
9am - 5pm
&
Saturday
9am - 12pm

76 Hepburn St (Main Street) Phone / Fax 9963 4195

*Pleased to meet you
with meat to please you*

Agent

At a Services Australia Agent you can:

-  use our computer to access my.gov.au and other government programs and services and to search for jobs
-  use the telephone to access our self service options or speak to us
-  access free Wi-Fi 24/7 to connect to government services. No password required
-  scan, fax and photocopy documents
-  have your confirmation of identity documents certified
-  lodge forms or pick up brochures

Agents can:

- respond to general questions on payments and services
- show you a quick and easy way to do your business using self service
- help you complete forms and other paperwork, and
- arrange referrals to specialist services.

Agents can't:

- make, review, assess or vary your payments, or
- issue Electronic Banking Transfers (EBTs), concession or Medicare cards.

Agents aren't Services Australia staff.

Your local Agent is:

Cue Community Resource Centre

Address:

72 Austin Street

Cue WA 8640

Hours of business:

Monday to Friday

9.00am to 4.00pm

To find other Agent locations go to servicesaustralia.gov.au

Self service

You can use your myGov account to access your Centrelink, Medicare and Child Support online accounts. Go to my.gov.au

You can also access our services through the Express Plus mobile apps.

For more information go to servicesaustralia.gov.au/selfservice

Centrelink phone self service

Phone self service	136 240
To report your income and changes to your circumstances	133 276

How to contact us

Go to servicesaustralia.gov.au for more information about payments and services or call the listed '13' or '1800' number most relevant to your situation.

ABSTUDY	Freecall™ 1800 132 317
Assistance for Isolated Children	132 318
BasicsCard balance enquiry	Freecall™ 1800 057 111
Centrelink debt repayment	Freecall™ 1800 076 072
Child Support	131 272
Disability, Sickness and Carers	132 717
Families	136 150
Farmers and their partners	132 316
Financial Information Service	132 300
For information in other languages:	
• Centrelink	131 202
• Medicare and Child Support	131 450
Grandparent Advisers	Freecall™ 1800 245 965
Income Management and BasicsCard	Freecall™ 1800 132 594
Indigenous Call Centre	Freecall™ 1800 136 380
Indigenous debt repayment	Freecall™ 1800 138 193
Job seekers	132 850
Low Income Health Care Card	132 490
Medicare	132 011

Medicare Aboriginal and Torres Strait Islander Access Line	Freecall™ 1800 556 955
National Redress Scheme	Freecall™ 1800 737 377
Older Australians	132 300
Students and trainees	132 490
TTY* enquiries	Freecall™ 1800 810 586
Complaints and feedback	Freecall™ 1800 132 468

Call costs from your home phone to a:

- **13 number** from anywhere in Australia may vary depending on the call plan you have chosen from your telephone service provider—mobiles may incur a higher charge.
- **1800 number (Freecall™)** are free—calls from a public phone and mobiles may be timed and charged at a higher rate.

* TTY is only for people who are deaf or have a hearing or speech impairment. A TTY phone is required for this service.



Australian Government
Services Australia



servicesaustralia.gov.au



BECOME A MENTAL HEALTH FIRST AIDER

to support friends, family members, colleagues and others

About 1 in 5 Australian adults experience a common mental illness each year. Mental Health First Aid (MHFA) training will teach you practical skills to support someone with a mental health problem. Make a real difference to people in your community.

STANDARD MHFA TRAINING BENEFITS

KNOWLEDGE

Improves knowledge of mental illnesses, treatments and first aid actions.

CONFIDENCE

Increases confidence in providing first aid.

DE-STIGMATISING

Decreases stigmatising attitudes.

SUPPORT

Increases the support provided to others.

"I enjoyed learning the skills to be an MHFAider. The content was interesting and the facilitators made me feel at ease, even with the more sensitive content." - Georgia



LEARN PRACTICAL FIRST AID SKILLS

- Recognise common mental health problems
- Provide initial help using a practical, evidence-based Action Plan
- Seek appropriate professional help, and
- Respond in a crisis situation

This is a 12-hour educational course, not a therapy or support group.



HOW DO I SIGN UP?

Contact Liz Lockyer to RSVP to this event at Elizabeth.Lockyer@health.wa.gov.au or on 9956 1963

DATES

Wednesday & Thursday
October 12th and 13th, 2022

TIMES

9am – 4pm (both days)

COST

FREE

VENUE

Cue Town Hall

FACILITATOR/S

Liz Lockyer & Isabel Ross

For more information, visit mhfa.com.au/courses



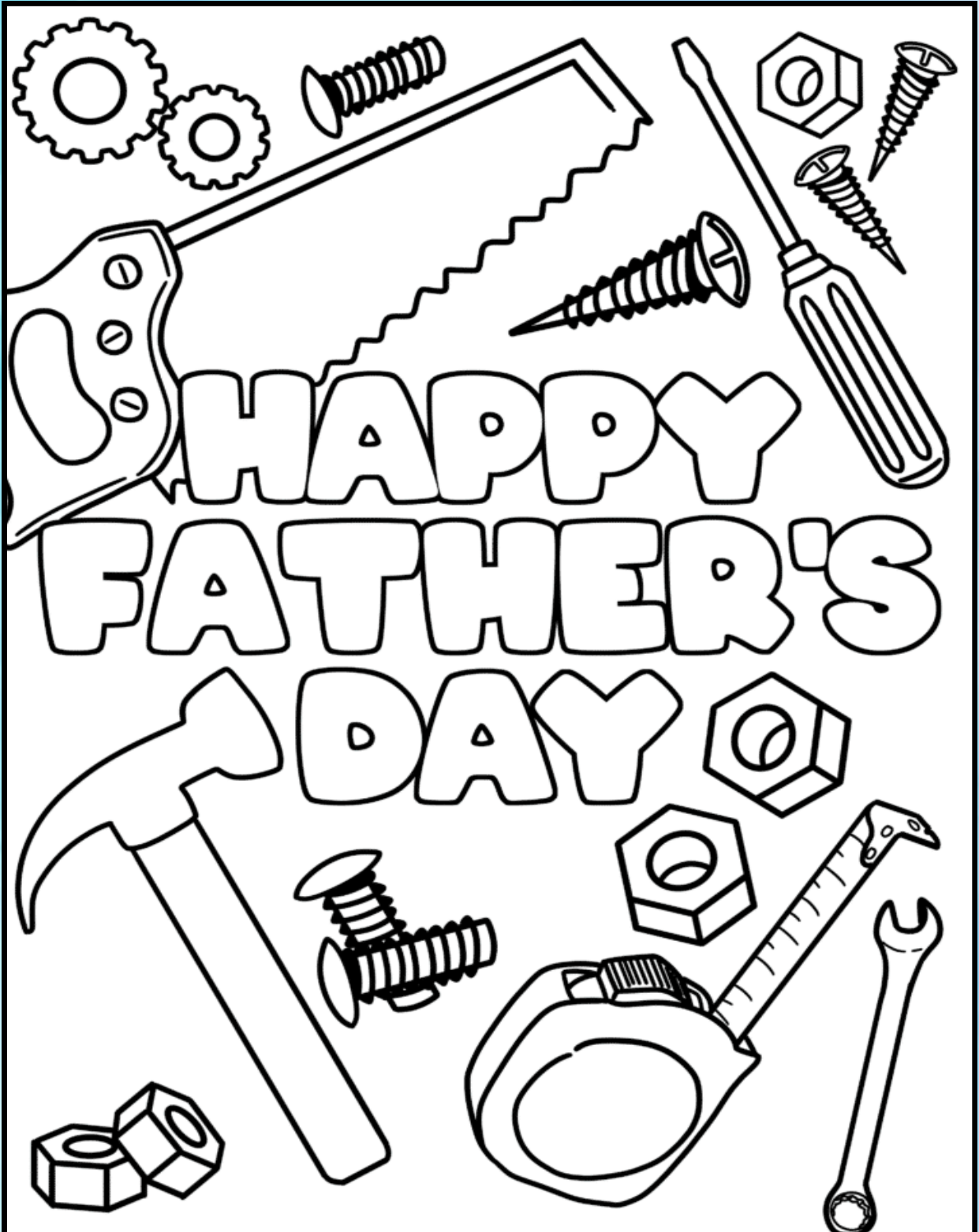
@MHFA_Australia



@mentalhealthfirstaid

Fathers Day

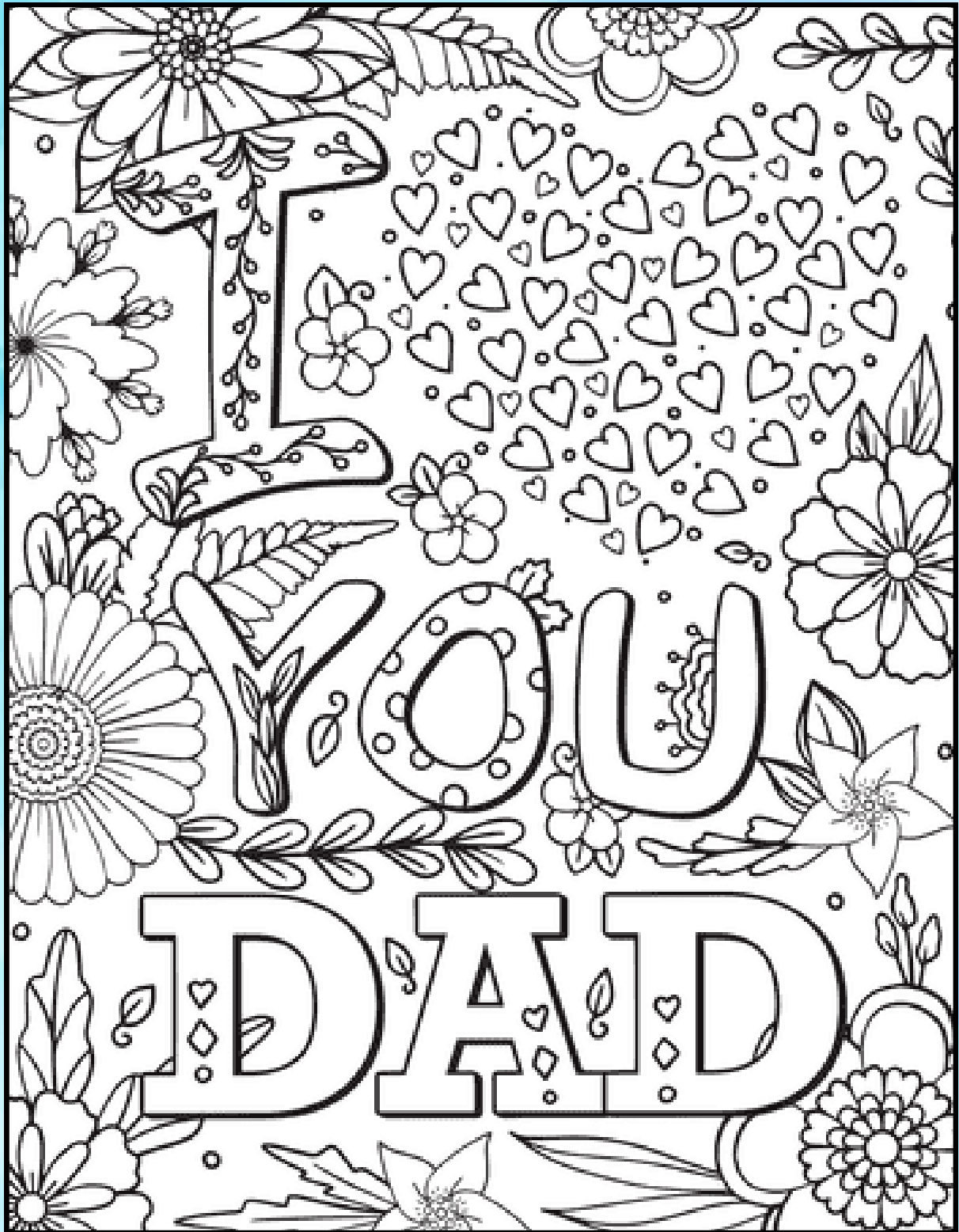
colouring Page



HAPPY
FATHER'S
DAY

Fathers Day

colouring Page



LOGIC PUZZLE

		Names					beers					medication				
		Brett	Connor	Derrick	Leslie	Scott	bitter	dark lager	pale ale	pilsner	stout	Captopril	enalapril	lisinopril	moexipril	toaster
Week days	Monday															
	Tuesday															
	Wednesday															
	Thursday															
	Friday															
Medication	Captopril															
	enalapril															
	lisinopril															
	moexipril															
	ramipril															
beers	bitter															
	dark lager															
	pale ale															
	pilsner															
	stout															

CLUES

- Brett arrived a day before the pale ale drinker.
- The person who arrived on Tuesday doesn't drink dark lager.
- Either the patient who was prescribed Lisinopril or the patient who was prescribed enalapril is Scott.
- Derrick arrived the day before Brett and the person who arrived on Friday doesn't drink bitter.
- The patient who was prescribed Ramipril is not Connor and The person who arrived on Friday doesn't drink dark lager.
- Among the pale ale drinker and Connor, one arrived on Friday and the other was prescribed enalapril for their heart condition.
- The five individuals are the pilsner drinker, Brett, Connor, the person who arrived on Thursday and the patient who was prescribed moexipril.
- Either leslies or Connor was prescribed enalapril for their heart condition.

WORD SEARCH

Y	S	W	C	A	N	N	E	D	M	U	L	E	S
M	R	O	P	G	F	O	E	R	A	C	I	A	L
R	E	R	A	E	N	S	E	L	E	C	T	O	R
O	D	S	G	T	O	I	R	D	R	I	F	S	G
T	R	T	E	N	S	N	K	U	D	L	N	O	N
S	O	L	R	E	O	U	Q	O	O	I	U	S	I
O	N	R	U	S	H	I	R	A	H	T	M	W	S
I	O	I	N	J	E	C	T	T	R	C	A	E	I
A	T	L	A	S	A	E	N	I	S	H	C	K	U
P	T	H	M	R	D	D	G	E	D	I	E	S	R
P	U	B	E	R	T	H	R	E	T	E	D	M	C
L	L	S	D	M	T	S	N	O	I	S	R	E	V
E	G	B	L	U	E	S	N	R	E	T	S	E	W
S	L	S	T	T	U	P	R	O	D	U	C	T	J

Apple

Atlas

Berth

Blues

Canned

Cares

Cheese

Choking

Cruising

Deter

Distrust

Dream

Edition

Floated

Glutton

Inject

Inlet

Itchiest

Maced

Mules

Named

Nearer

Nosed

Onrush

Orders

Outright

Pager

Product

Putts

Racial

Reins

Selector

Skews

Stench

Stormy

Teems

Theme

Thins

Tours

Unison

Versions

Westerns

Worst

EMERGENCY CONTACTS

EMERGENCY SERVICES - 000
Health Direct - 1800 022 222

NON-EMERGENCY
Police - 131 444
Nursing Post - 9963 0100

If you are feeling unwell, things to consider:

Nursing Post open Mon - Fri 8am to 4pm.

Nearest hospital is 120km away in Meekatharra.

The ambulance service in Cue may require the assistance of volunteers from Meekatharra or Mt Magnet to attend your call.

Cue is a remote community, be proactive, attend to your medical needs ASAP.

NURSING POST



September 2022

RFDS:

Tuesday 13th

Tuesday 27th

GRAMS:

Please contact the
Nursing Post

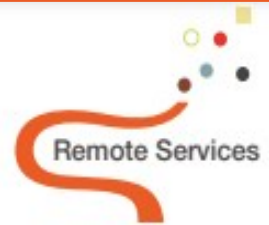
Dates were correct at time of print.
Please contact the Nursing Post to
confirm dates (08) 9963 0100.

EMERGENCY SERVICES

Fire & Rescue, Ambulance & Police

In case of emergency please call

000



Department of Transport Remote Services

Visiting: Cue

When: Tuesday 6th September 10am to 3pm

Where: Cue CRC

We will be able to help you with the following services:

- theory test
- photo card applications
- driver's licence applications
- change of address
- registration and driver's licence renewals
- vehicle transfers
- return of vehicle plates
- driving assessments

To enable us to help you, please ensure you bring your birth certificate, Medicare card, bank card and two types of proof of residency, along with cash or card for payment.

For enquiries please call: Karen - 9216 8194

Swap queue time, for you time



Online services available 24/7

Sign up to DoTDirect online services for around the clock services, payments, and applications, to manage your personal details, and more.

www.transport.wa.gov.au/dotdirect

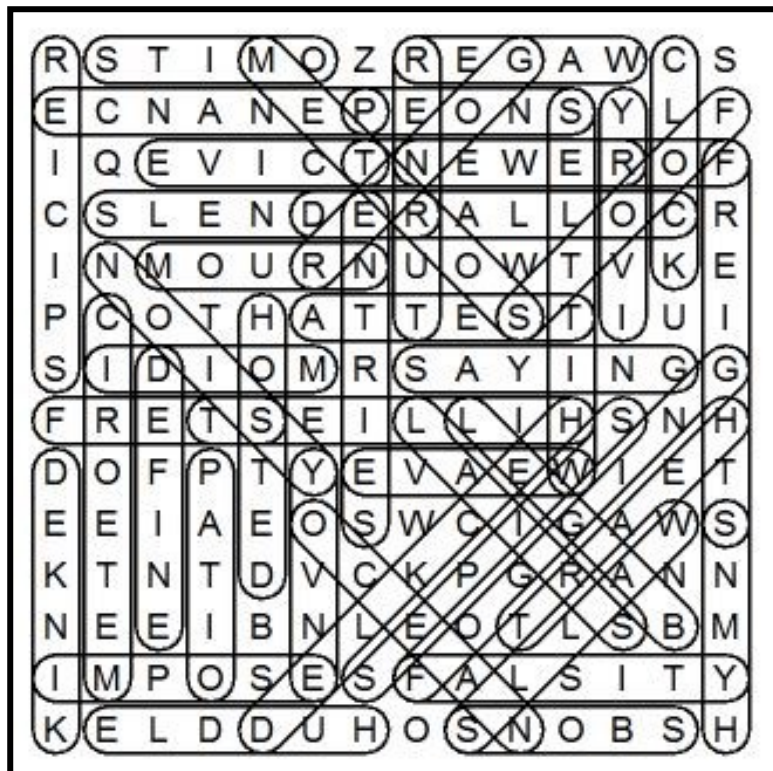


August Puzzle Solutions

AUGUST LOGIC PUZZLE SOLUTION

May 2nd	Sinful Sips	Mrs. Griffin	Sandwich
May 5th	Tricky Toys	Mr. Hall	Leaflet
May 8th	Pandora Box	Mrs. Mason	TV add
May 11	Ant Farm	Mrs wood	Radio add
May 14th	Book	Mr. Austin	Air balloon

AUGUST WORDS SOLUTION



AUGUST 45 WORDS SOLUTION

Algae	Dejected	Gorged	Koalas	Rules	Timer
Angry	Disintegration	Heaps	Mapped	Sadly	Toyed
Bears	Dogma	Hello	Mires	Sited	Warms
Cocoa	Dolly	Helms	Mismatches	Slits	Wrote
Coppers	Eerie	Hérons	Painless	Smashes	
Correctness	Emancipate	Hones	Peach	Spreadsheet	
Cross	Excerpts	Idiotic	Pilgrim	Stapler	
Dearly	Finite	Inching	Prune	Suburb	

Australia Day Awards promote national pride, community responsibility and participation.



Community Citizen of the Year Awards



Australia Day Council of Western Australia

We're all part of the story

Auspire – Australia Day Council WA presents the Community Citizen of the Year

Your local government invites you to nominate an outstanding individual or group for one of this year's Community Citizen of the Year Awards to be presented on Australia Day 26 January. The awards foster, recognise and celebrate significant contributions to community life and active citizenship in all local government areas of Western Australia. His Excellency the Governor of Western Australia is the Patron and signatory for the awards.

Guidelines and criteria

Each year three local citizens and one local community group in each local government area will be eligible for the Community Citizen of the Year Awards. The recipients will be selected from people and groups who have made a noteworthy contribution during the current year or given outstanding service to the local community over a number of years through active involvement.

Auspire - Australia Day Council WA provides four awards each year for presentation in each local government area. These prestigious awards are provided to your local government for presentation during Australia Day celebrations.

Nomination Process

Your local government invites nominations for the awards from community groups and private citizens. At the council's discretion, a committee comprised of people from community organisations and citizens, will be appointed to encourage and promote nominations. The committee or your local council may also make nominations based on local knowledge and experience.

Nominations open on 1 September and close on 31 October and can be received in hard copy on the original nomination form or online at www.citizenshipawards.com.au.

Nominations received after the closing date will be ineligible for this year's awards.

Selection Criteria

The winners will have been judged to have shown active citizenship and:

- Significant contribution to the local community.
- Demonstrated leadership on a community issue resulting in the enhancement of community life.
- A significant initiative which has brought about positive change and added value to community life.
- Inspiring qualities as a role model for the community.

Eligibility criteria

- Nominees should reside or work principally within the local authority making the award.
- Awards may be granted posthumously in recognition of recent achievements.
- Groups of people or couples will not normally be eligible except when meeting the criteria for a community group.
- A person may receive an award on more than one occasion in recognition of their particularly outstanding community contribution or involvement in an alternative initiative.
- Unsuccessful nominees may be nominated in future years.
- Nominations must be apolitical in their nature and should not in any way bring the awards program or local government area into disrepute.
- Sitting members of State, Federal and Local Government are not eligible.

The four award categories

- | Community Citizen of the Year
- | Community Citizen of the Year (Senior)
- | Community Citizen of the Year (Youth)
- | Active Citizen Award (Group or Event)

PRINCIPAL PARTNER



Government of Western Australia
Department of Communities

MEDIA PARTNERS



WAtoday
INDEPENDENT. ALWAYS.

Nomination for:

- Community Citizen of the Year
- Community Citizen of the Year – Youth (under 25)
- Community Citizen of the Year – Senior (65 years or over)
- Active Citizenship Award (for a community group or event)



Community
Citizen of the
year Awards



Australia Day
Council of
Western Australia

We're all part of the story

The Community Citizen of the Year Awards is a registered program of Aspire – Australia Day Council WA

Nominee

--	--	--

TITLE (Mr/Mrs/Dr/Prof)

GIVEN NAMES

SURNAME

--	--	--

GROUP (IF APPLICABLE)

--	--	--

ADDRESS

CITY

POSTCODE

(If you do not know the address, please simply include the City, State and Postcode)

--	--	--

EMAIL

--	--

TELEPHONE (HOME/MOBILE)

IS THE NOMINEE FROM A CaLD (CULTURALLY AND LINGUISTICALLY DIVERSE) BACKGROUND?

YES

NO

I DON'T KNOW

REASONS FOR NOMINATION

--

--

HOW HAS THE NOMINEE DEMONSTRATED ACTIVE CITIZENSHIP AND ENHANCEMENT OF COMMUNITY LIFE?

--

--

HOW HAS THE NOMINEE'S CONTRIBUTION BEEN RECOGNISED ELSEWHERE?

--

--

*Please attach additional information if required.

Nominator (Your name)

--	--	--

TITLE (Mr/Mrs/Dr/Prof)

GIVEN NAMES

SURNAME

--	--	--

TELEPHONE (HOME/MOBILE/WORK)

EMAIL

--	--

REFEREE/ALTERNATE PERSON

By submitting my nomination, I agree to give permission to The Australia Day Council of Western Australia to submit this nomination to other recognition programs such as the Australia of the Year Awards.

Submit your nomination to your local council by 31 October 2022

MURDOCH UNIVERSITY STERILISATION PROGRAM

Veterinary students from Murdoch University under the guidance of a senior veterinarian will be travelling to the Shire of Cue to perform sterilisations, pet checks and micro chipping for registered dogs and cats in the Shire of Cue.

DATE: Monday 17 October 2022

TIME: Monday from 8:00am – 5:00pm

VENUE: Cue Town Hall

Vaccination Costs

Vaccinations are free for pets being sterilised

\$30 for Concession card holders

\$50 for Non Concession card Holders



Murdoch students will carry out sterilisation and pet checks for **cats and dogs free of charge** to residents of Cue. Registrations are to be paid for by the owner prior to surgery or on the day and a registration tag will be issued.

EFTPOS available on the day, cash welcome.

Please contact the Shire by 10 October 2022 if you are interested in having your pet sterilised and micro chipped.

There are limited sterilisation opportunities available.

For further information please call the Shire office on 99638600

NOTE:

ALL cats must be sterilised, Micro chipped and registered.
ALL dogs must be micro chipped and registered by 1 November 2022.



September

SUNDAY	MONDAY	TUESDAY	WEDNESDAY	THURSDAY	FRIDAY	SATURDAY
				1	2	3
4 Father's Day	5	6 DOT	7 Craft Group	8	9	10
11	12	13 RFDS	14 Craft Group	15	16	17 Evan Ayres
18	19	20 Council Meeting	21 Craft Group	22	23	24
25	26 Public Holiday	27 RFDS	28 Craft Group	29	30	



Cue

Community Resource Centre

Your local connection

CRC Opening Hours

Monday

9am to 4pm

Tuesday

9am to 4pm

Wednesday

9am to 4pm

Thursday

9am to 4pm

Friday

9am to 4pm

Saturday

10am to 12pm

PLEASE NOTE:

You can visit the Cue Heritage Discovery Centre from 10am to 2.30pm Monday to Friday and on Saturday from 10am to 11.30am