

THE DRYBLOWER

November 2022



Cue's only dedicated news resource on
what's happening in and around Cue.



A not for profit community newsletter produced and distributed by the Cue CRC.

All editions are available electronically via cue.crc.net.au or cue.wa.gov.au.

DISTRIBUTION OUTLETS

Cue CRC
Shire of Cue
Queen of the Murchison B & B
Murchison Club Hotel
Cue Tourist Park
Cue Roadhouse

ADVERTISEMENT PRICES

SIZE	B & W	COLOUR
Full Page	\$30.00	\$60.00
Half Page	\$15.00	\$30.00
Quarter Page	\$10.00	\$15.00

DISCLAIMER

The information and personal views in this publication do not necessarily reflect the views of the Cue CRC or its employees. No liability shall be incurred for any omissions or errors in published articles or contributions. This publication is produced and distributed by the Cue CRC and any complaints should be directed to the Cue CRC

CONTACT DETAILS

Cue CRC
72 Austin Street
PO Box 83
Ph: 08 9963 1198
E: cue@crc.net.au

All contributions are due by the 25th for publication on the 1st.

Unable to collect your copy of The Dryblower?
Fill in the form below and send with your remittance.

NAME: _____

ADDRESS: _____

SUBSCRIPTION: _____ \$26.40 per year (this is for the cost of postage only)



Cue

Community Resource Centre

Your local connection

CRC Annual General Meeting

**Monday
21st November 2022
5.30pm**

With drinks and nibbles after.

CUE CRC

Hi All,

Not a lot happening in October at the CRC. We had Department of Transport visit as usual, with several people coming in to use their services.

The CRC provided the kids with a Halloween sausage sizzle after school on the 31st October. It was well attended with about 15 kids. We decorated the CRC front door, had some scary treats as well as provided each of the kids with a bag of lollies to take home with them.



In November we have the usual Department of Transport coming on Monday the 7th (Julie's 50th LOL). Our Annual General Meeting is on Monday the 21st of November at 5.30pm. We are no longer opening on Saturdays.

The Cue CRC will be closing over the Christmas/New Year from 21st December and reopening on 10th January. This means the January Dryblower will be late.

Julie Humphreys

Manager



CHDC NEWS

During my recent trip to Perth I wrote to National Cash Registers in USA for information on the wooden cash register in the CHDC. It was used in Big Bell hotel from 1937 onwards. Disappointingly, I heard nothing back.

A few days later I received a surprise phone call from Milton in Perth who specialises in refurbishing antique and vintage NCR cash registers and adding machines. I drove south to meet him where he presented me with two rare wooden drawers that were missing on our register. He also gave me some vintage adding machines and a typewriter, all of which are very hard to source. He was delighted that they would be on display in the CHDC once they have been cleaned up.

There was another surprise waiting for me when I returned. Some large wagon wheels and a set of windmill sails had arrived in the yard. Thanks to Ray for donating them and adding to our historic displays. Donations of historic items are always very much appreciated.



HISTORY: A windmill is a machine that converts the energy of wind into rotational energy by means of vanes called "sails". Originally windmills were used for grinding grain into flour for food production. Then their uses expanded to pumping water either to drain water from the land or to extract water from under the ground.

The structures typically referred to as windmills in Australia are more correctly called windpumps. In 1876 the Griffiths Brothers built the first four windmills in Australia. They were constructed from wood out of the Toowoomba Foundry and used to pump water on a Queensland station. These "Griffith's Mills" would go on to become the iconic Southern Cross brand.



Sandra Box
Customer Service Officer



"CUE" & A

ABOUT OUR LOCALS

Angela "Pickering"

NAME: Angela Pickering.

KNOWN FOR OR JOB: Happily Retired.

LAST THING DONE BEFORE SLEEP: Enjoy a cup of tea.

WHATS ON MY BEDSIDE: Water and a Book.

FAVOURITE FOOD: Sunday Roast.

HOW LONG HAVE I LIVED IN CUE: 16 years.

FAV THINGS TO DO IN CUE: Wandering around the bush.

PETS: Dog - Sophie.

FAVOURITE MOVIE: The Outlanders.

AFL OR SPORTS TEAM: AFL - Collingwood.

FAVOURITE BEVERAGE: Bourbon.

HOBBIES: Stained Glass/Art.

FAV HOLIDAY SPOT: Anywhere as long as its by the Beach

THE FIRST THING YOU WOULD BUY IF YOU

WON LOTTO: Campervan.

"CUE" & A

ABOUT OUR LOCALS

Any guesses as to
who will be in
the next
segment?



9963 1198
info@cuecrc.net.au

FROM THE CEO

I was fortunate enough to start October on leave spending some time with my family in Perth. While in Perth I attended the WALGA Local Government convention held at the Crown Towers accompanied by Shire President Ross Pigdon. As always the convention was packed full of information relevant to the Local Government sector. I attended the Heads of Agencies breakfast where I met with the Director General for the Department of Planning, Lands and Heritage to discuss future projects the Shire are considering undertaking including restoration works on the Masonic Lodge building, gazetting of the Northern Miners Pass Road and future expansion of the Industrial area. The Shire of Cue was also announced as the winner of the professional digital category for the Showcase in Pixels competition. Our winning video was produced by Dragonfly Media in Geraldton and a link to our submission will be made available on our website.

Nominations for the Australia Day Active Citizenship Award are now open. If you are aware of a community member who has made a significant contribution to the Cue community and you would like to see them acknowledged, nomination forms can be collected from the Shire office and close at the end of November. Preparations are underway for Australia Day 2023 and it is looking to be another spectacular event with live music and fireworks. More details will be provided closer to the event.

WA Seniors Week runs from 6 to 13 November to recognise the important role that seniors play in our community and acknowledge the contributions of older Western Australians. On Wednesday 9th November we will celebrate Seniors Week with an afternoon tea at the Queen of the Murchison from 2 - 3pm. Bookings are appreciated for catering purposes by contacting Tracy at the Shire office. Please let us know if you require assistance to attend the event. Tracy will be there on the day to assist anyone that requires help to sign up to the "My Aged Care" portal.

Halloween was a fun filled evening of costumes, art and craft activities, food and refreshments thanks to the great work of the Shire staff and grant funding provided by Healthway, Lotterywest and the Department of Communities through Meerilinga. Around 25 kids and 25 kids at heart attended the newly repurposed Railway building for the afternoon and evening on Friday 28 October, and enjoyed a range of activities from slip and slide on the oval to games and hidden surprises. This was followed by a bbq to finish off the evening. Thanks to all who supported this event.

The official opening of the Railway building as the new Youth and Community Centre was held on Saturday 29 October. Around 50 people attended the event which was organised in conjunction with the Cuerosity Shoppe. Attendees were encouraged to buy an outfit from the Cuerosity Shoppe and wear it for the event. There was an interesting assortment of outfits worn on the night and prizes were given for a variety of categories. Live music was provided by Gus McKay playing a variety of blues and the Shire provided a bbq dinner. Shire President Ross Pigdon provided some history on the Railway industry that was once prominent in Cue. Thank you to all people that helped with this event including the Cuerosity Shoppe volunteers, Gus and the Shire staff for the efforts in providing the finishing touches to the building ready for the event and making sure everything ran smoothly on the night.

The Shire working in conjunction with the Department of Fire and Emergency Services will be undertaking fire break works around Cue town site. Owners and occupiers of land are reminded of their obligations to clear and maintain fire breaks over the summer months. The summer months are also a time of storms and cyclones. Residents are also reminded to clean up and remove any unwanted or loose items from their property that could cause damage in a storm. Larger items can be collected by contacting the Manager of Works and Services to make arrangements.

Mosquito fogging operations are being undertaken when weather conditions allow. Residents are asked to check their properties and remove any potential mosquito breeding areas, by emptying containers holding water, ensuring gutters are not holding water and checking yards for areas that hold water.

Roadworks are ongoing 1km south of town on the Great Northern Highway. I have been informed that asphalt works are scheduled for mid-December to complete this section of roadworks. Westgold are modifying and improving the intersection where the Miners Pass Road meets the highway. Traffic management and reduced speed limits are in place. Travellers can expect minor delays.

The Murdoch University Vet Program was held on Monday 17 October at the Shire Hall. Students from the university provided free pet checks and sterilisation under the guidance of a senior vet. Other services available included microchipping and vaccination. Around forty animals were seen on the day and the program was again a great success. Thank you to Peter Smith from Canine Control for organising this again and ensuring everything ran smoothly on the day.

Dog owners are reminded of their obligations to keep their dogs contained within the boundaries of their property or on a leash while walking. Please be considerate of others as it can be quite confronting to be approached by an unknown dog while out walking. The Shire Ranger visits the area frequently and will take action against unrestrained dogs in public places. This may result in a financial penalty to the owner and potential destruction of offending animals. The only authorised area within the townsite where dogs are permitted to be exercised off-leash is the town oval. It is your responsibility to control and look after your pets.

Upcoming events:

Wednesday 9 November – WA Seniors afternoon tea

Friday 11 November - Remembrance Day

Friday 18 November - Cue Parliament

- Saturday 9 December – Town Christmas Function

Richard Towell
Chief Executive Officer, Shire of Cue

Next ordinary Council meeting - 6:30pm Tuesday 15 November 2022



You are invited to the

CUE COMMUNITY CHRISTMAS PARTY






**Saturday 10th December
5.30pm
Cue Town Hall**

Presentation by the school followed by a dinner.
Water & soft drinks provided.
Santa arrives at 6.30pm



Agent

At a Services Australia Agent you can:

-  use our computer to access my.gov.au and other government programs and services and to search for jobs
-  use the telephone to access our self service options or speak to us
-  access free Wi-Fi 24/7 to connect to government services. No password required
-  scan, fax and photocopy documents
-  have your confirmation of identity documents certified
-  lodge forms or pick up brochures

Agents can:

- respond to general questions on payments and services
- show you a quick and easy way to do your business using self service
- help you complete forms and other paperwork, and
- arrange referrals to specialist services.

Agents can't:

- make, review, assess or vary your payments, or
- issue Electronic Banking Transfers (EBTs), concession or Medicare cards.

Agents aren't Services Australia staff.

Your local Agent is:

Cue Community Resource Centre

Address:

72 Austin Street

Cue WA 6640

Hours of business:

Monday to Friday

9.00am to 4.00pm

To find other Agent locations go to servicesaustralia.gov.au

Self service

You can use your myGov account to access your Centrelink, Medicare and Child Support online accounts. Go to my.gov.au

You can also access our services through the Express Plus mobile apps.

For more information go to servicesaustralia.gov.au/selfservice

Centrelink phone self service

Phone self service	136 240
To report your income and changes to your circumstances	133 276

How to contact us

Go to servicesaustralia.gov.au for more information about payments and services or call the listed '13' or '1800' number most relevant to your situation.

ABSTUDY	Freecall™ 1800 132 317
Assistance for Isolated Children	132 318
BasicsCard balance enquiry	Freecall™ 1800 057 111
Centrelink debt repayment	Freecall™ 1800 076 072
Child Support	131 272
Disability, Sickness and Carers	132 717
Families	136 150
Farmers and their partners	132 316
Financial Information Service	132 300
For information in other languages:	
• Centrelink	131 202
• Medicare and Child Support	131 450
Grandparent Advisers	Freecall™ 1800 245 965
Income Management and BasicsCard	Freecall™ 1800 132 594
Indigenous Call Centre	Freecall™ 1800 136 380
Indigenous debt repayment	Freecall™ 1800 138 193
Job seekers	132 850
Low Income Health Care Card	132 490
Medicare	132 011

Medicare Aboriginal and Torres Strait Islander Access Line	Freecall™ 1800 556 955
National Redress Scheme	Freecall™ 1800 737 377
Older Australians	132 300
Students and trainees	132 490
TTY* enquiries	Freecall™ 1800 810 586
Complaints and feedback	Freecall™ 1800 132 468

Call costs from your home phone to a:

• **13 number** from anywhere in Australia may vary depending on the call plan you have chosen from your telephone service provider—mobiles may incur a higher charge.

• **1800 number (Freecall™)** are free—calls from a public phone and mobiles may be timed and charged at a higher rate.

* TTY is only for people who are deaf or have a hearing or speech impairment. A TTY phone is required for this service.



Australian Government
Services Australia



servicesaustralia.gov.au



POLICE BEAT

Hello

I am again pleased to report little crime in Cue over the past month or so. We did have a little hiccup which has been dealt with. Unfortunately, we do have the occasional visitor to town who commits crime affecting all of our safety. We do have some strategies to deal with those people and are pro-active in keeping them out of town when we can.

While we have had a bit of a break from unlawful activity in town, it's good to remind people ways in which you can help us deal with those that continue to break the law. One of the best ways you do something is to pull out the old mobile phone and record or take a photo of something you think isn't right. We did manage to get a video of an off-road motorcycle doing a wheelie on the street which resulted in that motorcycle being confiscated. This does mean being a little discreet as people doing wrong thing sometimes get upset if they are recorded. Its best they get upset with me because that's what we get paid for. If you do record something, feel free to contact the station during office hours and drop it in to us for review and actioning.

I know I don't have to talk inflation but it is that time again in the fuel cycle when the prices are high are not everyone wants to pay \$2.50 a litre for their diesel so please ensure any fuel cans or long-range tanks on the back of your ute are secure so the contents doesn't disappear. Please lock them up as last time prices were up like this, we did have fuel stolen occasionally.

As I mentioned in the last article, we were lucky to get another permanent staff member in Senor Constable Joe WELSH. Joe comes to us from Yalgoo and before that some time in Burringurrah and Geraldton and the mid-west region. Please introduce yourself to Joe when you see him about.

Thanks for your time.

Mark, Pete and Joe.

REMEMBRANCE DAY

11 November 2022

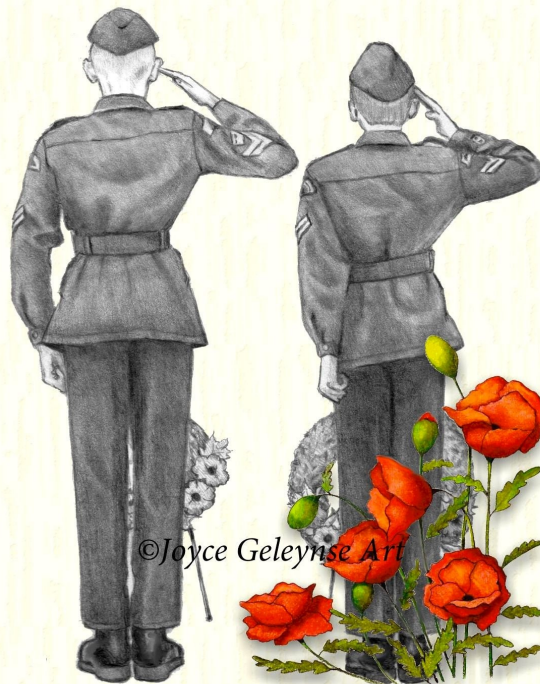
In Flanders Fields

By Lieutenant Colonel John McCrae

In Flanders fields the poppies blow
Between the crosses, row on row,
That mark our place; and in the sky
The larks still bravely singing, fly
Scarce heard amid the guns below.

We are the dead; short days ago,
We lived, felt dawn, saw sunset glow,
Loved and were loved; and now we lie
In Flanders fields!

Take up our quarrel with the foe
To you, from failing hands, we throw
The torch; be yours to hold it high
If ye break faith with us who die,
We shall not sleep, though poppies grow
In Flanders fields.



A short ceremony will take place at A S Gurney Memorial Park next door to the Shire office building on Austin Street, Cue.

10.45am

Friday 11th November 2022



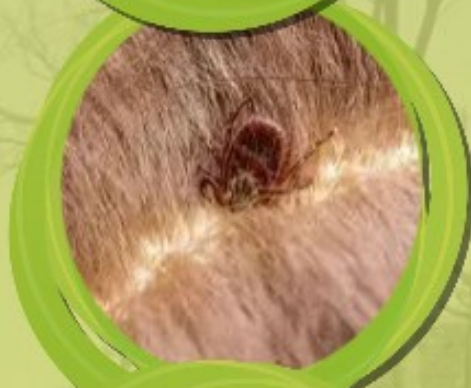
ENVIRONMENTAL HEALTH

Yulella can assist you with:

- Rubbish collection (Needs to be ready)
- Leaking taps & basic plumbing repairs
- Parasite Control Treatments
- Whipper snipping around septic tanks
- Removing rubbish from Community
- Cockroach baits
- Mice traps
- Removal of stray animals
and more!

We also have free soaps, sanitisers, and emergency relief frozen meals available!

Please call Reception on 9980 1339 for enquiries or to request these services





FOOD ASSISTANCE

Free Frozen meals available for
Pensioners and Welfare
Recipients



Mon-Thurs 8-12

**CALL YULELLA ON
0899631760
TODAY**

Lot 586 Heydon Place, Cue

CUE PRIMARY SCHOOL

RESILIENCE: RESPECT: RESPONSIBILITY

The start of this term has been frenetic and our students continue to make us proud with their effort and achievement. Even though we went to camp at Mt Gibson last term, it was obviously a treasured life moment for Room 2 who continue to talk about it. They planned, drafted and created some wonderful recounts.

Camp at Mount Gibson

By Jayziah

Last term Room 2 went to Mount Gibson. We camped with Caris, Mr M, Miss Wendy and Gloria. I liked sleeping in a tent. We woke up very early in the morning.

On the bus ride when we went to Mount Gibson and it was LOUD on the bus.

The next day we went spotlighting in cars. We saw a baby woylie, bandicoots and hopping mice.

On the last day we had hamburgers for lunch. We got home at 4pm.

I want to go back next term.



Room 2 Mount Gibson

By Maddie

Last term Room 2 went to school camp at Mount Gibson Animal sanctuary. We went with Caris, Mr M, Miss Wendy and Nana.

On the way to Mount Gibson we played a game called I Spy and we had lunch at Paynes Find.

When we got to Mount Gibson we set up our tents and we had dinner. After dinner we went spotlighting and we saw bilbies and numbats. I fell asleep in the car.

It was fun at Mount Gibson because there was a lot of different things to do.



As part of our Positive Behaviour Support at school, students earn 'Dojo' points for doing their best especially in the areas of Respect, Resilience & Responsibility. This week our students got to use those points to purchase rewards from our prize room. Their joy on their faces was incredible and **they** earned it! More prizes are being purchased to re stock.





RECYCLING:

Cue PS has started collecting bottles as part of our recycling and sustainability program. There is a pod at the top gate which you can access to drop your containers in during school hours. We are also looking for newsprint as well for other projects. Funds raised will be used to purchase bush tucker plants and expand our vege garden program.

Last week we were invited to **Yalgoo** to participate in an **Athletics carnival** where we were taught skills in a few disciplines. Our students did extremely well in the sprints and relays - I think their training paid off. Shot Put was new to them and Barry from our high school group got some personal coaching in the Javelin.



TERM 4 DATES

- 1st Nov - Australian Olympian visit
- 4th Nov - Teachers training in Talk 4 Writing
- 14th - 18th Nov - Artists in Residence Awesome Arts
- 18th Nov - Room 1 Assembly / Tacos
- 14th Nov - 2nd Dec - Swimming Lessons in Mt Magnet
- 10th Dec - Xmas function at town hall
- 15th Dec - last day for students.



PLUMBING & GAS

SERVICING MID WEST & GOLDFIELDS REGIONS

MINING | COMMERCIAL | RESIDENTIAL | INDUSTRIAL

24/7 EMERGENCY

PH : 0416 307 843 | ADMIN@LEISKHYDRAULICS.COM.AU

COMPUTER USE FACILITIES

The Cue CRC
has guest computer facilities.
Feel free to come down
and use it.
Our friendly staff are here
to assist you if required.

For more info contact the Cue CRC on
Ph: 9963 1198 or E: info@cuecrc.net.au

- ✓ Internet access
- ✓ Email
- ✓ Banking
- ✓ Many more...



BELL & CO (EMPORIUM) LIQUOR—GROCERIES



49 Austin St, Cue W.A. 6640

OWNER /MANAGERS
Ross & Pix Pigdon

*Please let us know if you are not happy
with our service*

Shop Hours

Monday—Friday: 9 am — 1.00 pm
Monday—Friday: 3.30pm — 6.00 pm
Saturday: 9 am — 12.00pm
Sunday: Closed
Public Holidays: to be advised

Agents For:

All Evaporative Air Conditioning Parts
Coerco Water Tanks & Agriculture Products
Mt Magnet Meats
Toll Ipec
Firearms Dealer

Phone: 08 99631012
Fax: 08 99631370
Pix Mobile: 0428508090
Mobile: 0427864165 (Toll Ipec)
email: bellcoptyltd@bigpond.com.au

**MOUNT MAGNET
MEATS**



**The only FRESH PRODUCE
BUTCHER in the Mid West**

Open
Monday - Friday
9am - 5pm
&
Saturday
9am - 12pm

76 Hepburn St (Main Street) Phone / Fax 9963 4195

*Pleased to meet you
with meat to please you*

CUE RAILWAY BUILDING HISTORY

The Cue railway station building was originally built in 1898 approximately one year after the trains were operating in the Murchison. The building is an example of the early architecture of the region and the prosperity of Cue as a booming gold and wool region. In the early days the building housed tea rooms for the passenger train.

In the past the railway station and the railway that came to Cue was the main freight link between Perth, Geraldton and Meekatharra, also having spur lines from Mt Magnet to Sandstone, Meekatharra to Wiluna, Cue to Big Bell and covered the Murchison region for freight and passenger transport and was considered the lifeline to the Murchison.

There were two designated freights train from Perth to Cue per week this carried general freight from Perth for station owners, miners and towns' folk. The train returned with stock mainly sheep and cattle, wool, minerals including ore and red ochre from Wilgie Mia.

In addition to the station building there was a goods shed and a goods unloading ramp with a fixed crane. The ramp and crane are still in place. The workshop had a number of employees, fitters and there was also a number of other staff that were all housed in railway supplied housing that was constructed in and around the station building and the railway line. These people were housed in stone constructed houses similar to that of the station masters house that is still standing to the South of the station. To the North past the loco shed was three more houses of similar stone construction and there were also three other houses on Wittenoom Street to the South West of the station.

Cue was a Crew depot. Trains from Mullewa to Meekatharra changed crews in Yalgoo and Cue. The building still standing to the North of the station that is privately owned now, was the changeover train crew barracks which consisted of a driver, a fireman and a guard. These personnel would stay at the barracks until the next train.

Whilst the railway was running steam driven engines, Cue had a workshop and a turntable to turn steam engines around which was located just past where the ramp is today. During this time if there was a ball on at Big Bell, one of the steam engines had to do a maintenance test run that just happened to tie in with taking people to the ball and would be delayed in Big Bell until the ball finished and could bring them back again. This was seen as normal until one of the bosses found out, then they had to use the gangers' trolley which only held about six people and was easy to hide. The steam trains ran until 1958 when diesel trains took over the rails. From this point onwards the loco shed and it's staff were transferred to Mullewa.

The trains would sometimes get stuck at a station due to flooding on the track or breakdown. One particular incident the train was stopped in Yalgoo due to flooding, this was back in 1959 when the roads were gravel. A truck turned up from Meekatharra and they said they were running out of groceries, the truck then went along the carriages and found the carriage with the beer in it. That's all they took and returned to Meekatharra.

We had two freight trains to Cue a week, one on Tuesday the other on Friday. These trains were service number 73 up and 74 return. We had one passenger train which used to leave Perth on Wednesday night, arrive in Mullewa Thursday morning. This train was an overnight with sleeper compartments. A change of trains at Mullewa to Meekatharra stopping at every siding on the way. Pindar siding and Warraga sidings were very important. As it was a short walk from the train to the pub. A little more difficult at Mt Magnet and Cue. This trip to Cue took

something like 12 hours from all the stopping. However if the train broke down it was longer. It was supposed to arrive in Cue at 8pm on Thursday evening. This made Thursday evenings in Cue a big event as everyone would turn up at the station to see who was arriving. This included the local constabulary.

This passenger train coming up, would you believe was service number 69, sleepers and all. This train has first class, which consisted of two person bunk with it's own toilet and wash basin. Second class had four bunks with a common toilet at either end of the carriage. There was also a compartment carriage which we commonly termed as dog boxes. Each compartment could seat five to six people and had one toilet and wash basin. Each compartment had door access either side straight out onto the platform. These were not popular as you could not get out of the compartment and move around the train. Hence the name dog box.

School kid's trains used to run six times a year. Three up and three back. Most adults would only travel on these trains once as this was more than enough experience to realise that it is not a pleasant journey with a train full of students. For the students you would meet all of the other kids in Murchison and was a great social interaction.

The train service to Cue ceased operations on 1 May 1978 and progressively the railway lines were removed and the surrounding buildings demolished.

The railway building was converted into a sports complex in 1986 and operated until the mid-1990's when the oval ablution block was built and utilised for Cue fest and sports events. The railway building was unused since the mid 90's. The building was added to the Register of Heritage Places in July 2002. It has now been restored and it is hoped will provide many years of use for the residents of Cue.



THE RAILWAY STATION, CUE. 1900.
It was constructed in 1898.

COLOURING PAGE



COLOURING PAGE



OPENING OF THE CUE YOUTH CENTRE

The official opening of the Cue Youth & Community Centre was held on Saturday the 29th October by the Shire of Cue in conjunction with the Cuerosity Shoppe. Wow ! We saw some amazing op shop ensembles from our locals, sashaying in making a grand entrance. There was great food and fabulous music by talented Gus Mackay.

Shire President Ross Pigdon gave a interesting speech about the history of the railway station. Shire of Cue CEO Richard Towell thanked everyone who contributed to the Railway Project and well as the grant providers, Lotterywest \$350,000 and Local Roads and Community Infrastructure Program \$130,000.

Now enjoy the fantastic photos below of our wonderful towns folk in their Op Shop Attire.





LOGIC PUZZLE

		Names					Cell phone					Vegetables				
		Brett	Briana	Danica	Grayson	Yasmin	Cingular	Nextel	US Wireless	Verizon	nTelos	antichokes	carrots	endive	leeks	rhubarb
Hospital bills	\$810															
	\$870															
	\$1,210															
	\$1,300															
	\$2,340															
Vegetables	antichokes															
	carrots															
	endive															
	leeks															
	rhubarb															
Cell phone	Cingular															
	Nextel															
	Us Wireless															
	Verizon															
	nTelos															

CLUES

1. The person with the Verizon cell phone owes more money than Briana.
2. Of Yasmin and Grayson, one has the \$1300 hospital bill and the other loves rhubarb.
3. The patient with the \$1210 hospital bill doesn't enjoy rhubarb and the one who loves leeks doesn't have a cell phone with Cingular.
4. The 5 people were the one who loves endive, the person with the Verizon cell phone, the patient with the \$2340 hospital bill, Brett, and the one who loves artichoke's.
5. The person with the Nextel cell phone is Danica and the patient with the \$810 hospital bill loves artichoke's.
6. Either the one who loves artichokes or the one who loves carrots has always used US Wireless and the one who loves endive owes more money than Grayson.
7. The one who loves endive owes more money than the person with the Cingular cell phone and the one who loves carrots doesn't have a cell phone with US wireless.

WORD SEARCH

V	T	S	C	R	A	P	E	D	E	S	S	A	M
D	S	H	E	K	A	U	Q	E	L	M	C	L	E
O	E	E	G	D	N	I	N	P	R	I	O	R	M
S	I	E	H	U	T	G	R	R	S	R	U	E	I
E	R	P	R	C	A	T	E	A	H	K	S	G	N
H	E	S	H	G	R	R	I	H	L	C	A	D	E
T	E	Y	E	R	A	U	F	M	A	A	A	E	N
I	L	D	L	B	A	P	H	L	D	B	M	O	T
W	A	L	K	E	R	S	A	C	E	A	I	O	P
F	A	D	N	M	H	T	E	L	D	L	S	B	F
O	P	E	A	O	I	C	M	E	R	L	S	U	E
W	T	U	D	O	N	A	B	A	E	E	N	S	I
L	L	D	N	I	O	F	E	V	H	D	R	M	N
S	Y	O	B	M	O	T	D	E	S	C	E	N	T

Admit

Agreed

Amiss

Ankle

Aptly

Balled

Barer

Booed

Churches

Cleave

Descent

Embed

Eminent

Engaged

Escalation

Facts

Feint

Fowls

Fraught

Funds

Guild

Harped

Herded

Itchy

Leeriest

Malaria

Massed

Mauls

Nurse

Phrase

Poach

Prior

Quake

Rhino

Scraped

Shoddy

Smirk

Spurt

Teaks

Tomboys

Walkers

Withes

EMERGENCY CONTACTS

EMERGENCY SERVICES - 000
Health Direct - 1800 022 222

NON-EMERGENCY
Police - 131 444
Nursing Post - 9963 0100

If you are feeling unwell, things to consider:

Nursing Post open Mon - Fri 8am to 4pm.

Nearest hospital is 120km away in Meekatharra.

The ambulance service in Cue may require the assistance of volunteers from Meekatharra or Mt Magnet to attend your call.

Cue is a remote community, be proactive, attend to your medical needs ASAP.

NURSING POST



November 2022

RFDS:

Tuesday 8th

Tuesday 22th

Please contact the
Nursing Post for
GRAMS.

Dates were correct at time of print.
Please contact the Nursing Post to
confirm dates (08) 9963 0100.

EMERGENCY SERVICES

Fire & Rescue, Ambulance & Police

In case of emergency please call

000

Kids Halloween Party

Friday afternoon the 28th October we had the Kids Halloween Party at the new Youth Centre. Wow!!! The kids didn't disappoint, the costumes were amazing!!!! They had food, drinks and some yummy treats. The slip and slide was great fun as were the games. Thank you to Meerilinga, Go for 2 & 5, Healthway, Lotterywest and Department of Communities for the grant that allowed us to present this event.







Department of Transport Remote Services

Visiting: Cue CRC

When: Monday 7th November, 1pm to 3pm

Where: 72 Austin Street, Cue WA 6640

We will be able to help you with the following services:

- theory test
- photo card applications
- driver's licence applications
- change of address
- registration and driver's licence renewals
- vehicle transfers
- return of vehicle plates
- driving assessments

To enable us to help you, please ensure you bring your birth certificate, Medicare card, bank card and two types of proof of residency, along with cash or card for payment.

For enquiries please call:

Karen - 9216 8194

Swap queue time, for you time



Online services
available 24/7

Sign up to DoTDirect online services for around the clock services, payments, and applications, to manage your personal details, and more.

www.transport.wa.gov.au/dotdirect

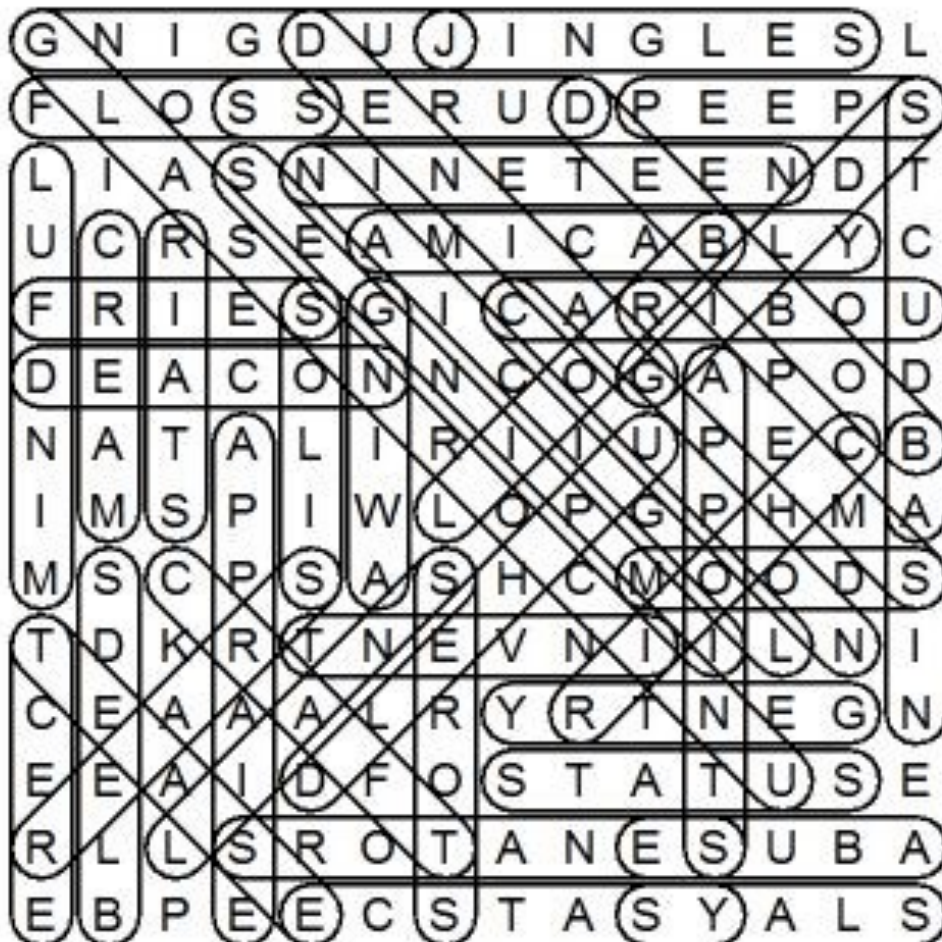
DoTDirect

October Puzzle Solutions

OCTOBER LOGIC PUZZLE

MONTH/DAY	NAMES	CAMERA	UNIVERSITIES
January 24th	Gustavo	Nikon	Duke
February 22nd	Genevieve	Kodak	Harvard
March 10th	Blake	Canon	MIT
June 19th	Gerardo	Fujifilm	Cornell
November 17th	Solomon	Casio	Dartmouth

OCTOBER WORD SEARCH



Australia Day Awards promote national pride, community responsibility and participation.



Community Citizen of the Year Awards



Australia Day Council of Western Australia

We're all part of the story

Auspire – Australia Day Council WA presents the Community Citizen of the Year

Your local government invites you to nominate an outstanding individual or group for one of this year's Community Citizen of the Year Awards to be presented on Australia Day 26 January. The awards foster, recognise and celebrate significant contributions to community life and active citizenship in all local government areas of Western Australia. His Excellency the Governor of Western Australia is the Patron and signatory for the awards.

Guidelines and criteria

Each year three local citizens and one local community group in each local government area will be eligible for the Community Citizen of the Year Awards. The recipients will be selected from people and groups who have made a noteworthy contribution during the current year or given outstanding service to the local community over a number of years through active involvement.

Auspire - Australia Day Council WA provides four awards each year for presentation in each local government area. These prestigious awards are provided to your local government for presentation during Australia Day celebrations.

Nomination Process

Your local government invites nominations for the awards from community groups and private citizens. At the council's discretion, a committee comprised of people from community organisations and citizens, will be appointed to encourage and promote nominations. The committee or your local council may also make nominations based on local knowledge and experience.

Nominations open on 1 September and close on 31 October and can be received in hard copy on the original nomination form or online at www.citizenshipawards.com.au.

Nominations received after the closing date will be ineligible for this year's awards.

The four award categories

- | Community Citizen of the Year
- | Community Citizen of the Year (Senior)
- | Community Citizen of the Year (Youth)
- | Active Citizen Award (Group or Event)

Selection Criteria

The winners will have been judged to have shown active citizenship and:

- Significant contribution to the local community.
- Demonstrated leadership on a community issue resulting in the enhancement of community life.
- A significant initiative which has brought about positive change and added value to community life.
- Inspiring qualities as a role model for the community.

Eligibility criteria

- Nominees should reside or work principally within the local authority making the award.
- Awards may be granted posthumously in recognition of recent achievements.
- Groups of people or couples will not normally be eligible except when meeting the criteria for a community group.
- A person may receive an award on more than one occasion in recognition of their particularly outstanding community contribution or involvement in an alternative initiative.
- Unsuccessful nominees may be nominated in future years.
- Nominations must be apolitical in their nature and should not in any way bring the awards program or local government area into disrepute.
- Sitting members of State, Federal and Local Government are not eligible.

PRINCIPAL PARTNER



Government of Western Australia
Department of Communities

MEDIA PARTNERS



WAtoday
INDEPENDENT. ALWAYS.

Nomination for:

- Community Citizen of the Year
- Community Citizen of the Year – Youth (under 25)
- Community Citizen of the Year – Senior (65 years or over)
- Active Citizenship Award (for a community group or event)



Community
Citizen of the
year Awards



Australia Day
Council of
Western Australia

We're all part of the story

The Community Citizen of the Year Awards is a registered program of Aspire – Australia Day Council WA

Nominee

--	--	--

TITLE (Mr/Mrs/Dr/Prof)

GIVEN NAMES

SURNAME

--	--	--

GROUP (IF APPLICABLE)

--	--	--

ADDRESS

CITY

POSTCODE

(If you do not know the address, please simply include the City, State and Postcode)

--	--	--

EMAIL

--	--

TELEPHONE (HOME/MOBILE)

IS THE NOMINEE FROM A CaLD (CULTURALLY AND LINGUISTICALLY DIVERSE) BACKGROUND?

YES

NO

I DON'T KNOW

REASONS FOR NOMINATION

--

HOW HAS THE NOMINEE DEMONSTRATED ACTIVE CITIZENSHIP AND ENHANCEMENT OF COMMUNITY LIFE?

--

HOW HAS THE NOMINEE'S CONTRIBUTION BEEN RECOGNISED ELSEWHERE?

--

*Please attach additional information if required.

Nominator (Your name)

--	--	--

TITLE (Mr/Mrs/Dr/Prof)

GIVEN NAMES

SURNAME

--	--	--

TELEPHONE (HOME/MOBILE/WORK)

EMAIL

--	--

REFEREE/ALTERNATE PERSON

By submitting my nomination, I agree to give permission to The Australia Day Council of Western Australia to submit this nomination to other recognition programs such as the Australia of the Year Awards.

Submit your nomination to your local council by 31 October 2022

Cue Sub Centre St John's Ambulance

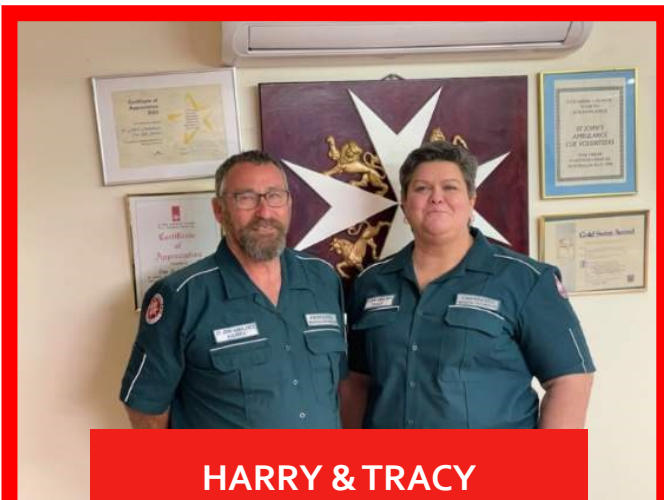
Cue Sub Centre has some awesome updates. We are currently renovating the two toilets, one will be a unisex toilet the other will be a laundry and shower. We also received a grant from Melissa Price which allowed us to purchase a great training manikin that gives us valued feedback on how accurate our CPR technique is and how to improve. We would like to welcome Melissa Montgomery to the Sub Centre and congratulate her on completing her Emergency Medical Responder training. Harry Casey and Tracy Bachraty have also completed their Emergency Medical Technician training. Cue Sub Centre is always looking for new members and drivers.



TRAINING MANIKIN



MEN'S BATHROOM



**HARRY & TRACY
BADGE PRESENTATION**



**MEL'S UNIFORM READY
FOR ACTION**

November

SUNDAY	MONDAY	TUESDAY	WEDNESDAY	THURSDAY	FRIDAY	SATURDAY
		1	2 Craft Group	3	4	5
6	7 DOT	8 RFDS	9 Craft Group	10	11 Remembrance Day	12
13	14	15 Council Meeting	16 Craft Group	17	18	19
20	21 CRC AGM	22 RFDS	23 Craft Group	24	25	26
27	28	29	30 Craft Group			



Cue

Community Resource Centre

Your local connection

CRC Opening Hours

Monday

9am to 4pm

Tuesday

9am to 4pm

Wednesday

9am to 4pm

Thursday

9am to 4pm

Friday

9am to 4pm

Saturday

CLOSED

PLEASE NOTE:

You can visit the Cue Heritage Discovery Centre from 10am to 2.30pm Monday to Friday.